

# EnterNet for Macintosh

## Help Facility

This document contains information that will help you to understand and use EnterNet version 1.2 for Macintosh PPPoE client software. For additional information, see the About file that shipped with this version of EnterNet. The following topics are included in this document:

- [Introducing EnterNet for Macintosh](#)
- [System Requirements](#)
- [EnterNet and Other PPP Software](#)
- [Installing EnterNet](#)
- [The EnterNet Control Strip Module](#)
- [Setting your TCP/IP Parameters](#)
- [Switching between TCP/IP Configurations](#)
- [Configuring and Using EnterNet](#)
  - [Starting EnterNet Settings](#)
  - [Creating Additional User Configurations](#)
  - [Renaming User Configurations](#)
  - [Establishing a Connection with EnterNet](#)
  - [Selecting Services](#)
  - [Disconnecting EnterNet](#)
  - [Other EnterNet Features](#)
- [Removing EnterNet from your System](#)
- [Further Information](#)

### **Introducing EnterNet for Macintosh**

EnterNet enables you to connect to high-speed broadband networks like Digital Subscriber Line (DSL), cable modem, and fixed wireless, using Point to Point Protocol over Ethernet (PPPoE). The PPPoE protocol allows service providers to use time-tested PPP-based client authentication and configuration systems.

EnterNet supports two types of connections: EnterNet Classic and EnterNet RA. EnterNet Classic is designed for systems running Mac OS releases 7.6 or newer but older than 8.6, and for 68K-based computers. EnterNet RA is designed for systems running Mac OS 8.6 or newer (but not Mac OS X). Systems running Mac OS 8.6 or later can install and run both EnterNet Classic and EnterNet RA versions of EnterNet.

If you select the Easy Install option to install EnterNet, the installer automatically determines which version of EnterNet is appropriate for your system. If you want to install EnterNet Classic rather than EnterNet RA on a system capable of supporting EnterNet RA, use the Custom Install option. If you want to install both versions on your system, use the Custom Install option.

The EnterNet Classic version is designed for users with older systems and offers some enhancements over earlier versions of EnterNet. For example, EnterNet Classic now reports server messages in the log file rather than as an alert. EnterNet Classic also now uses the Domain Name Server (DNS) settings in the TCP/IP control panel when the server does not provide them.

If EnterNet Classic detects any existing connection profiles during install, it will preserve them.

EnterNet RA features include the ability to connect automatically whenever an Internet application accesses the network. If you connect manually, the settings application and optional Control Strip module automatically configure the network connection for you. EnterNet RA includes a native Open Transport PPPoE module for communicating with the PPPoE server (requires Open Transport 2.0.3 or newer). (PPPoE communications are faster with EnterNet RA.) EnterNet RA also allows you to select services offered by your service provider.

The optional Control Strip module displays status information and provides a menu where you can start and stop connections.

You can automate EnterNet RA using the AppleScript command for Apple Remote Access. See the AppleScript dictionary in "Remote Access Commands" in the Script Additions folder.

## **System Requirements**

This software will work on any Macintosh system running Mac OS 7.6 or newer with Open Transport 1.1.2 or newer. However, this software will not work with Mac OS X. Mac OS X users can use the PPPoE client software included with Mac OS X. (See your Mac OS X documentation for more information about this.)

During installation, an Open Transport connection module named ENI Network Access Module will be installed in your Extensions folder. This module works with Apple's Remote Access software to provide PPPoE connections. Other software also is installed to help you create and manage your network connections.

If you are running a version of Mac OS older than 8.6 or a 68K-based Macintosh, the Open Transport module will not work with your computer. However, it still is installed so it will be available to you when you upgrade to a newer Mac OS.

Also during installation on all computers, an mdev (MacTCP Device) named "EnterNet Classic" will be installed on your computer. This software works with the TCP/IP Control Panel to create a connection to the Internet. Please note that "EnterNet Classic" will stop working if you upgrade to a newer version of Open Transport after installing EnterNet. You can reactivate it by reinstalling EnterNet.

## **EnterNet and Other PPP Software**

Older systems (Mac OS 8.0 and older) may have a conflict between EnterNet Classic and other networking software. When you start your Macintosh, Open Transport versions 1.2 and older will load only the first mdev encountered alphabetically in the Extensions folder. This means, for example, that if you have EnterNet Classic and AOL Link (which comes with America Online 3.0) installed, EnterNet Classic will not be loaded at system boot unless it is selected in the TCP/IP Control Panel and the "Load Only When Needed" check box is un-checked. It also may be loaded later if you select it in the TCP/IP Control Panel and run an Internet application. When you start EnterNet Settings, you will be alerted if EnterNet Classic has not been loaded by Open Transport because other PPP software is installed.

This problem was resolved in Open Transport version 1.3, (Mac OS 8.1 and newer).

## **Installing EnterNet**

Start the installer application by double-clicking it. Follow the instructions presented on your screen.

During installation you may be presented with a window for a "User ID" and a "Password," which will be saved as your default connection setting. Your service provider also may ask for a "Network" name. If so, enter the Network name supplied by your service provider. If your service provider does not require a network name, you will not be asked to supply one and the Network field typically will not display on the main screen. If you are asked for a Network name but your service provider did not give you one, leave the field empty.

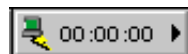
While you may choose not to provide a password, you must provide a user ID. If you do not yet have a valid user ID, you may place a temporary value in the field now and replace it at a later time.

You must restart your system before using the application. When the system is restarted, the "EnterNet" folder will be open and an alias to the application will be present on your desktop.

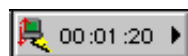
### **The EnterNet Control Strip Module**

Some versions of EnterNet contain a Control Strip module, which provides quick access to common EnterNet features. If you have the Apple Control Strip installed prior to installing the application, the EnterNet Control Strip module will be installed. The Control Strip module will allow you to connect and disconnect EnterNet Classic and EnterNet RA, to start the application, to open the EnterNet Settings TCP/IP Control Panel, and to enable or disable the connection timer which appears on the Control Strip module. You may need to adjust the font or the font size used by the Apple Control strip to allow the Control Strip module timer to be properly displayed. Geneva 9-point font works well on most machines.

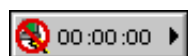
When EnterNet is not connected, its Control Strip module will appear as below:



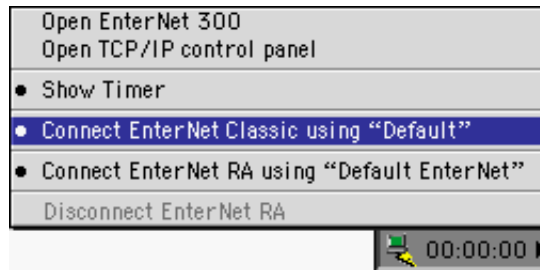
When the application is connected, its Control Strip module will appear as below:



If the application fails to load at startup, the "Connect" and "Disconnect" menu items in the application's Control Strip module will not be available, and the Control Strip module will appear as below:



Clicking the Control Strip module reveals the Control Strip module menu. From this menu you can perform numerous operations quickly and conveniently. The image below is an example of the capabilities available from the Control Strip module.

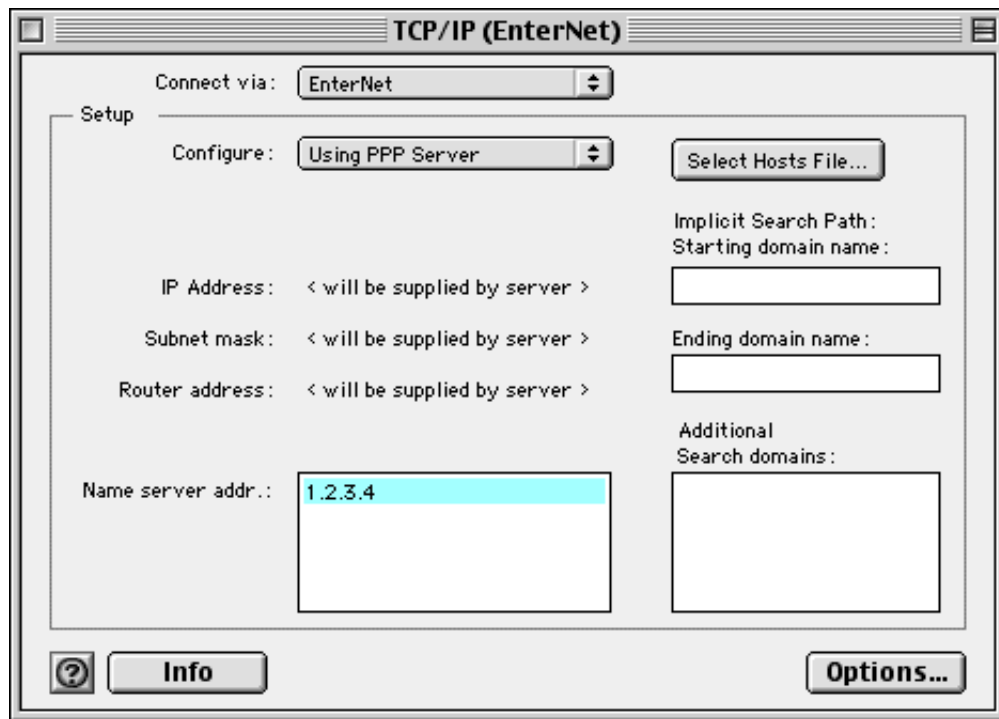


## **Setting your TCP/IP Parameters**

To connect automatically with EnterNet RA, use the "EnterNet Default" configuration.

To establish a connection using EnterNet Classic, your TCP/IP parameters must be properly set. The most efficient way to configure TCP/IP for use by the application is to create a TCP/IP Configuration for EnterNet. To create a TCP/IP Configuration:

1. Open the TCP/IP Control Panel by selecting "TCP/IP" from the application's "Protocol" menu, or by selecting "Open TCP/IP control panel" from the Control Strip module.
2. From the "File" menu, select "Configurations." The "Configurations" window will appear.
3. Select any Configuration from the list of Configurations and click "Duplicate." The "Duplicate Configuration" window will appear.
4. Enter "EnterNet " in the "Duplicate as:" field then click "OK." The "Duplicate Configuration" window will close and the "Configurations" window will be present.
5. Click "Make Active." The "Configurations" window will close and the TCP/IP Control Panel will be present.
6. Select "EnterNet Classic" in the "Connect via:" drop-down menu.
7. Select "Using PPP Server" in the "Configure" drop-down menu.
8. If there are no values present in the "Name server addr:" box, place the cursor in the upper-left corner of the box and enter the value "1.2.3.4" (do not include the quotes). This value will be replaced automatically when a connection is established, but Open Transport requires that a value be present at this time.
9. Select "Quit" from the "File" menu. A dialogue box will appear asking if you want to save your changes. Click "OK."



## **Switching between TCP/IP Configurations**

If your computer's Ethernet interface is also used for other purposes, you probably will have multiple TCP/IP Configurations. The "EnterNet" TCP/IP Configuration must be active before you can make a connection using EnterNet Classic and for EnterNet RA to connect automatically. To switch between TCP/IP Configurations:

1. Open the TCP/IP Control Panel by selecting "TCP/IP" from the application's "Protocol" menu, or by selecting "Open TCP/IP control panel" from the Control Strip module.
2. From the "File" menu, select "Configurations." The "Configurations" window will appear.
3. Click on the Configuration named "EnterNet," then click "Make Active." The "Configurations" window will close and the TCP/IP Control Panel will be present.
4. Select "Quit" from the "File" menu.

The "EnterNet" TCP/IP Configuration is now active and ready for use by the application.

## **Configuring and Using EnterNet**

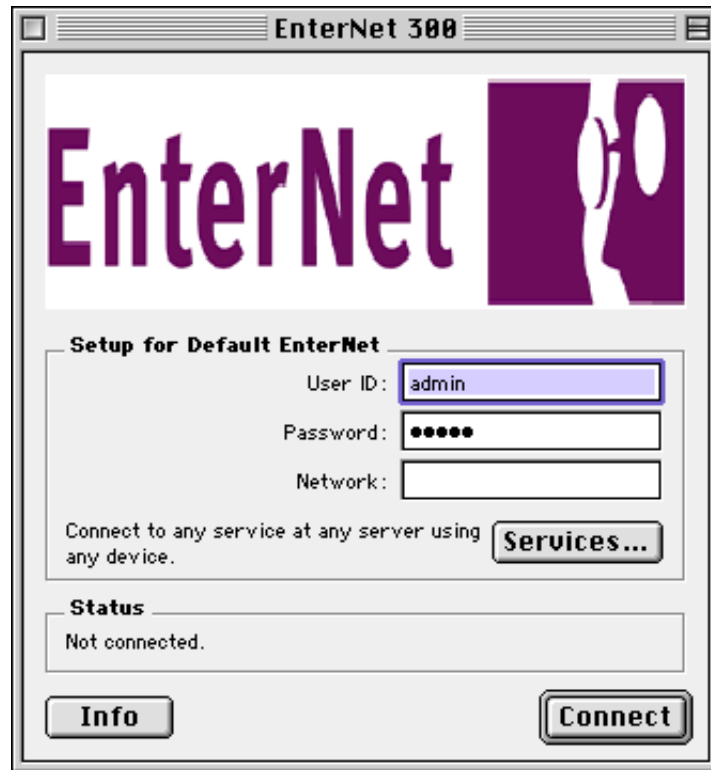
This section will provide you with information about starting, configuring, and using the application.

### **Starting EnterNet Settings**

To start the application:

1. Double-click the "EnterNet Settings alias" icon, which can be found on your desktop, or

double-click "EnterNet Settings" in the "EnterNet" folder. The application's main screen will present you with the user ID, password, and (optional) network name values you provided during installation. (If you do not see the Network field, your service provider does not require it. If you see the Network field, but your service provider did not supply you with a network value, leave the field empty. If you cannot connect when the Network field is empty, you must contact your service provider for help.)



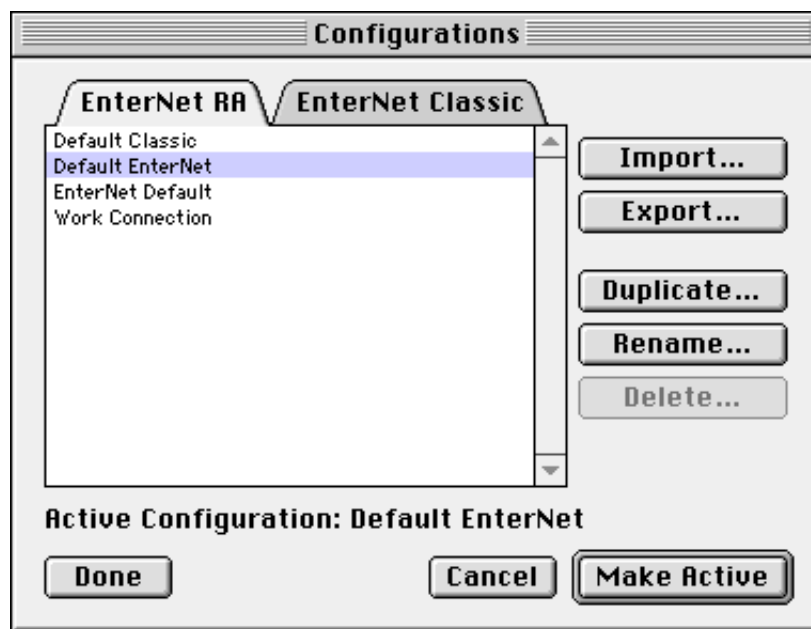
## Creating Additional User Configurations

If you have multiple user accounts, follow these directions to create an additional User Configuration for each account:

1. Start EnterNet Settings as described above.
2. Select "Configurations" from the EnterNet Settings "File" menu.
3. In the "Configurations" window, click an existing Configuration, then click "Duplicate."
4. In the "Duplicate Configuration" window, provide the desired Configuration name and click "Duplicate." The "Duplicate Configuration" window will close, and the "Configurations" window will be visible.
5. In the "Configurations" window, click "Make Active." The "Configuration" window will close.
6. On the EnterNet Settings application, replace the existing values in the "User ID"

and "Password" fields, then select "Save Configuration" from the "File" menu.

7. Repeat steps one through six above for each User Configuration you want to create.



## Renaming User Configurations

You can rename User Configurations as follows:

1. Start EnterNet Settings as described above.
2. Select "Configurations" from the "File" menu.
3. Click the Configuration you want to rename, then click "Rename." The "Rename Configuration" window will appear.
4. On the "Rename Configuration" window, provide the desired Configuration name and click "Rename." The "Rename Configuration" window will close and the "Configuration" window will be present.
5. Repeat steps one through four above for each User Configuration you want to rename.
6. When you have finished renaming Configurations, click "Done" on the "Configurations" window.

## Establishing a Connection with EnterNet

There are two ways you can establish a connection:

Connect from the EnterNet Settings Application: Open the application as described in [Starting EnterNet Settings](#), above. The application will appear and will offer the User ID and Password parameters of the last active User Configuration. If you want to use a different User Configuration, you must make the desired configuration the active configuration by selecting it from the "Configurations" menu, as follows:

1. With the EnterNet Settings application running, select "Configurations" from the "File" menu.
2. Click on the name of the desired User Configuration then click "Make Active." This will close the "Configurations" window and will load the User Configuration into the application.

Click "Connect" to establish a connection. When a connection is established, you will see the message "Connected to host EnterNet" in the "Status" box of EnterNet. You can "Close" or "Quit" the application without affecting your connection.

Connect from the Control Strip module: Click the Control Strip Module, move the cursor to a User Configuration (Identified as "Connect EnterNet using "\_Configuration\_") and click again. (The Control Strip module is not available on all systems.) This will begin the connection process using the settings from the selected configuration. If you did not provide and save the associated password when you created the selected User Configuration, the computer will ask you to provide the password now.

## Selecting Services

EnterNet automatically discovers services carried and advertised by your service provider. To select or change a service, click "Services" in the main window. If the service you want is advertised by your service provider, you will see it displayed as an icon. Double click it to select it.

To add an unadvertised service, click "Add Service." Be careful to enter the Service information exactly as it is supplied by your service provider.

To select a connection device, choose one from the Connect Using list. The default device is "any device." The "any device" option is the best for most users unless you always are connecting using AirPort and never Ethernet, in which case you should select "AirPort."

## Disconnecting EnterNet

If the application is not already running, start it, then click "Disconnect." If you have the Control Strip module installed, you can disconnect by selecting "Disconnect EnterNet" from the Control Strip module.

## Other EnterNet Features

By selecting "Preferences" from the application's "Edit" menu, you are presented with the "Preferences" screen, shown below. (If the Preferences option is not available on your system, your service provider has disabled it and you cannot make changes.) Some, or all, of the following options may be available in the "Preferences" window:

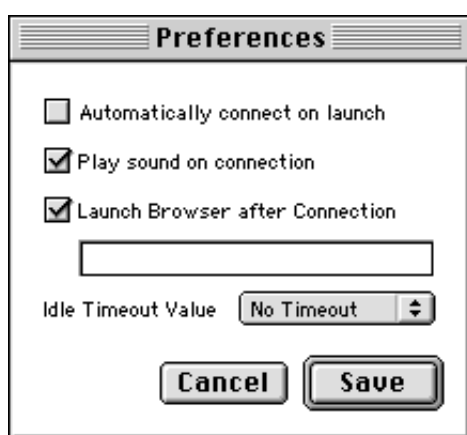


'Automatically connect on launch': When this box is checked, the application automatically will begin connecting when EnterNet Settings is opened.

'Play sound on connection': When this box is checked, the system will play a sound when a connection is established.

'Launch browser after Connection': If this box is checked, the system will automatically start your default web browser after is connects. Unless you specify a different URL in the box provided (maximum of 63 characters), your browser will connect to the URL specified as the browser's default home page.

'Idle Timeout Value': Use this menu to specify how long you will remain connected when there is no network traffic.



## **Removing EnterNet from your System**

Follow these steps to remove the EnterNet software from your system:

1. Be sure that EnterNet is not connected. See [Disconnecting EnterNet](#), above for further information.
2. In the TCP/IP Control Panel, select a Configuration other than "EnterNet." See [Switching Between TCP/IP Configurations](#), above for further information.
3. Locate and open the file you used to install the application. It should be labeled "Install EnterNet."
4. When presented with the EnterNet splash screen, press "Continue." When presented with the License Agreement, press "Accept."
5. You now will see a window titled "Install EnterNet." Choose "Uninstall" from the menu in the upper left corner of the window.
6. The uninstallation process will begin. You will be asked if you want to remove the preferences files. If you plan to re-install the application and want to re-use your existing User Configurations, click "No." Otherwise click "Yes."

7. The uninstaller will notify you when it has completed its work. Close the dialogue box by clicking "OK."

8. At this time, your system will be restarted by the Installer. If it does not restart, and if the "Install EnterNet" window is still present, click "Quit," which will cause the system to restart. If your computer does not restart automatically, you must restart it manually. If you do not restart your computer after uninstalling EnterNet, your computer may crash and you might lose important data.

### **Further Information**

If you have a question that is not answered by this Help file, you may wish to consult the "About EnterNet" file which can be found in the folder where you installed EnterNet. The default installation folder is "EnterNet" on your system's startup drive. You also may want to review the EnterNet for Macintosh Frequently Asked Questions (FAQs) document online at <http://support.efficient.com/KB/NTS/macintosh.html>. For additional information on EnterNet, refer to the web page at <http://www.efficient.com/products/enternet.html>.

If these resources do not provide the answers you need, please contact your service provider. Efficient Networks does not provide technical assistance directly to EnterNet end users.

The EnterNet PPPoE client software was developed for Efficient Networks by Efficient Networks, Inc. All rights reserved.