

SIEMENS



**Guida all'installazione
ed uso del modem ADSL
Alice Gigaset ADSL**

Contents

Safety precautions	5
The Alice Gigaset ADSL	7
First Steps	8
System requirements	8
Package contents	8
Operating displays and connections	9
Front Panel	9
Rear Panel	10
Choosing a place for the Alice Gigaset ADSL	10
Overview of the steps to install the Alice Gigaset ADSL	11
Connecting the Alice Gigaset ADSL	11
Connecting via USB	12
Connecting via Ethernet	13
Connecting to the splitter	13
Powering on the Alice Gigaset ADSL	15
Final steps	15
Installing USB driver	16
For Windows 98 SE, ME	16
For Windows 2000	17
For Windows XP	21
Configuring network connection	25
For Windows 98 SE and Windows ME	25
TCP/IP installation	25
Obtaining the IP address automatically	29
For Windows 2000	32
TCP/IP installation	32
Obtaining the IP address automatically	36
For Windows XP	37
Starting TCP/IP configuration	37
Obtaining the IP address automatically	38
For Mac OS X	39
Starting network configuration	39
Obtaining the IP address automatically	41

Contents

Alice Gigaset ADSL status information 43

Opening the Status page 43

Status information 43

Appendix 45

Fault tracing 45

Uninstalling USB driver 47

 For Windows 98 SE, ME 47

 For Windows 2000 48

 For Windows XP 49

Specifications 51

Index 52

Safety precautions

Safety precautions

For Installation

- ◆ Use only the type of power source indicated on the marking labels.
- ◆ Use only the power adapter supplied with the product.
- ◆ Do not overload wall outlet or extension cords as this may increase the risk of electric shock or fire. If the power cord is frayed, replace it with a new one.
- ◆ Proper ventilation is necessary to prevent the product overheating. Do not block or cover the slots and openings on the device, which are intended for ventilation and proper operation.
- ◆ Do not place the product near any source of heat or expose it to direct sunlight.
- ◆ Do not expose the product to moisture. Never spill any liquid on the product.
- ◆ Do not attempt to connect with any computer accessory or electronic product without instructions from qualified service personnel. This may result in risk of electronic shock or fire.
- ◆ Do not place this product on an unstable stand or table.

For Using

- ◆ Power off and unplug this product from the wall outlet when it is not in use or before cleaning. Pay attention to the temperature of the power adapter. The temperature might be high.
- ◆ After powering off the product, power on the product at least 15 seconds later.
- ◆ Do not block the ventilating openings of this product.
- ◆ When the product is expected to be not in use for a period of time, unplug the power cord of the product to prevent it from the damage of storm or sudden increases in rating.

For Service

- ◆ Do not attempt to disassemble or open covers of this unit by yourself. Nor should you attempt to service the product yourself, which may void the user's authority to operate it. Contact qualified service personnel under the following conditions:
- ◆ If the power cord or plug is damaged or frayed.
- ◆ If liquid has been spilled into the product.
- ◆ If the product has been exposed to rain or water.
- ◆ If the product does not operate normally when the operating instructions are followed.
- ◆ If the product has been dropped or the cabinet has been damaged.
- ◆ If the product exhibits a distinct change in performance.

Please note:

- ◆ Any changes or modifications not expressly approved by the party responsible for compliance could void the authority to operate equipment.

Safety precautions

Trademarks

Microsoft, Windows 95, Windows 98, Windows 98 SE, Windows ME, Windows NT, Windows 2000, Windows XP and Internet Explorer are registered trademarks of the Microsoft Corporation.

Mac OS X is a registered trademark of Apple Computer, Inc.

Netscape, Netscape Navigator and Netscape Communicator are registered trademarks of the Netscape Communications Corporation.

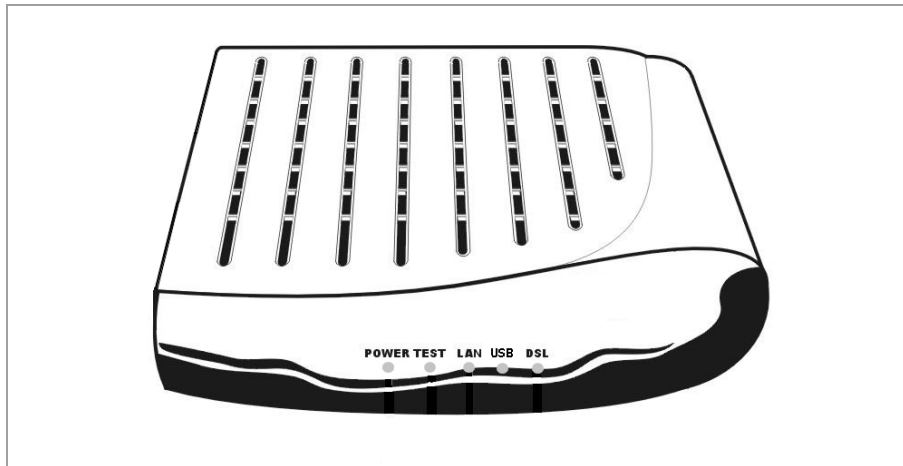
The Alice Gigaset ADSL

The Alice Gigaset ADSL

The Alice Gigaset ADSL is an Asymmetric Digital Subscriber Line (ADSL) Modem and can be used as a comfortable communication device for fast ADSL access to the internet. With the asymmetric technology, this device runs over standard copper phone lines. In addition, ADSL allows you to have both voice and data services in use simultaneously all over one phone line.

Using the modem's standard Ethernet interface you are able to connect your PC to the internet via its LAN interface. Alternatively you can use the modem's USB interface.

The Alice Gigaset ADSL is designed to offer cost-effective high-speed services for home or office users. It provides a downstream rate of up to 8 Mbps and upstream rate of up to 1 Mbps for ADSL connection, even offers auto-negotiation capability for different line modes (G.dmt, G.lite, or T1.413 Issue 2) according to central office DSLAM's settings (Digital Subscriber Line Access Multiplexer).



First Steps

First Steps

System requirements

To operate your Alice Gigaset ADSL you need

- ◆ a PC with
 - an USB adapter or
 - an Ethernet network card
- ◆ a Web browser, such as Microsoft Internet Explorer 5.0 or higher, Netscape Navigator 6.2 or higher for configuring your modem
- ◆ for Internet access: the access data of your Internet Service Provider.

Package contents

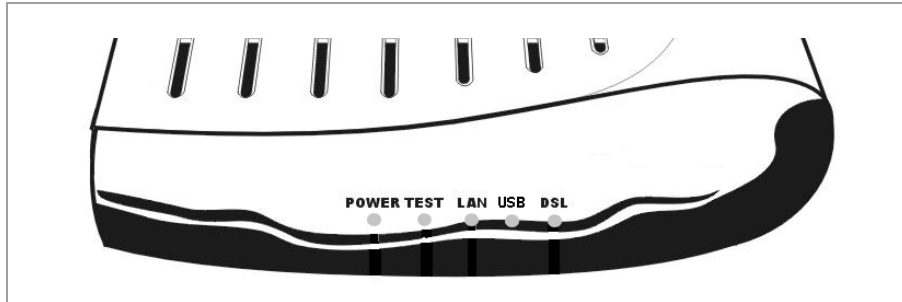
Check the contents of the package against the pack contents checklist below. If any of the items is missing, then contact the dealer from whom the equipment was purchased.

- ◆ Alice Gigaset ADSL
- ◆ Power Adapter and Cord
- ◆ RJ-11 ADSL Line Cable
- ◆ RJ-45 Ethernet Cable
- ◆ USB Cable
- ◆ Driver & Utility Software CD

Operating displays and connections

Front Panel

The following illustration shows the front panel of the Alice Gigaset ADSL:



LED Indicators

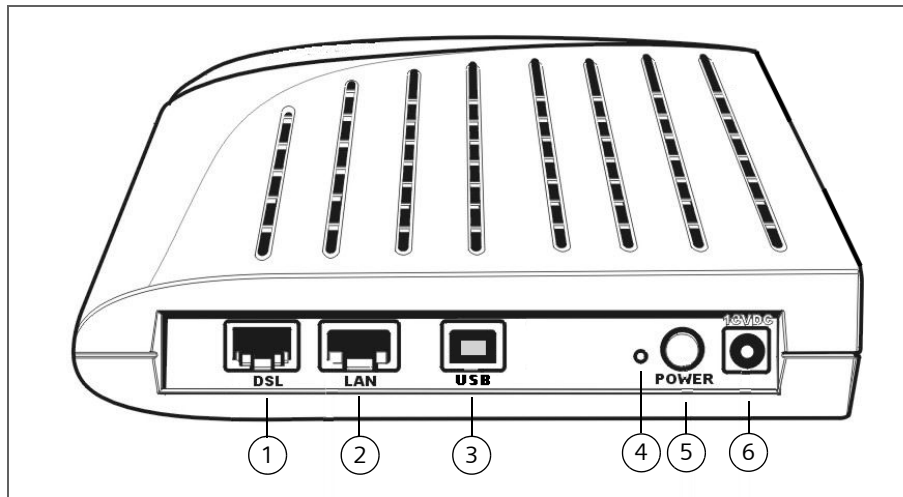
The Alice Gigaset ADSL is equipped with five LEDs on the front panel as described in the table below (from left to right):

LED	Colour	Status	Description
Power	Green	Off	Power off.
		On	Power on.
Test	Green	Off	Power off or initial self-test of the unit is OK.
		Blinking	When software downloading or updating operation parameters is in progress.
		On	Initial self-test failure or memory failure occurred.
LAN	Green	Off	Power off or no devices is connected to the LAN port.
		Blinking	The LAN port is sending or receiving data (traffic).
		On	A device is connected to the LAN port.
USB	Green	Off	Power off or USB not connected.
		Blinking	The USB port is sending or receiving data (traffic).
		On	A device is connected to the USB port.
DSL	Green	Off	Power off or ADSL training is in progress.
		Blinking	The DSL port is sending or receiving data (traffic).
		On	ADSL line connection is trained and ready for data traffic.

First Steps

Rear Panel

The following figure illustrates the rear panel of your Alice Gigaset ADSL.



- | | | |
|---|-------|---------------------------|
| 1 | DSL | RJ-11 connector |
| 2 | LAN | Ethernet RJ-45 connector |
| 3 | USB | USB connector |
| 4 | | Reset button |
| 5 | POWER | Power switch |
| 6 | | 16V AC 1A power connector |

Warning: Using the wrong power supply unit may damage the device.

Choosing a place for the Alice Gigaset ADSL

- ➔ Place the Alice Gigaset ADSL close to DSL wall outlet and power outlet for the cable to reach it easily.
- ➔ Avoid placing the device in places where people may walk on the cables. Also keep it away from direct sunlight or heat sources.
- ➔ Place the device on a flat and stable stand.

Overview of the steps to install the Alice Gigaset ADSL

- ◆ **When connecting the Alice Gigaset ADSL via the USB port:** First install the USB driver from the attached CD-ROM. How to install the USB driver on the specific operating system of your PC is documented in the chapter "Installing USB driver" on page 16. Plug the cable to the USB port of your PC not earlier than when you are asked to do so or when USB driver installation is completed.
- ◆ Connect the Alice Gigaset ADSL to your PC as described in the sections "Connecting via USB" on page 12 respective "Connecting via Ethernet" on page 13.
- ◆ Connect the Alice Gigaset ADSL to the splitter (see "Connecting to the splitter" on page 13).
- ◆ Power on the device (see "Powering on the Alice Gigaset ADSL" on page 15).
- ◆ Check the network configuration of your PC to ensure that it will work together with the Alice Gigaset ADSL properly (see "Configuring network connection" on page 25).
- ◆ Setup and configure the connection with the Internet (see "Final steps" on page 15).

Connecting the Alice Gigaset ADSL

Follow the steps below to connect the related devices. The first step depends on the connection you want to use:

- ◆ If you want to connect the Alice Gigaset ADSL via USB, see "Connecting via USB" below.
- ◆ If you want to connect the Alice Gigaset ADSL via Ethernet, see "Connecting via Ethernet" on page 13.

First Steps

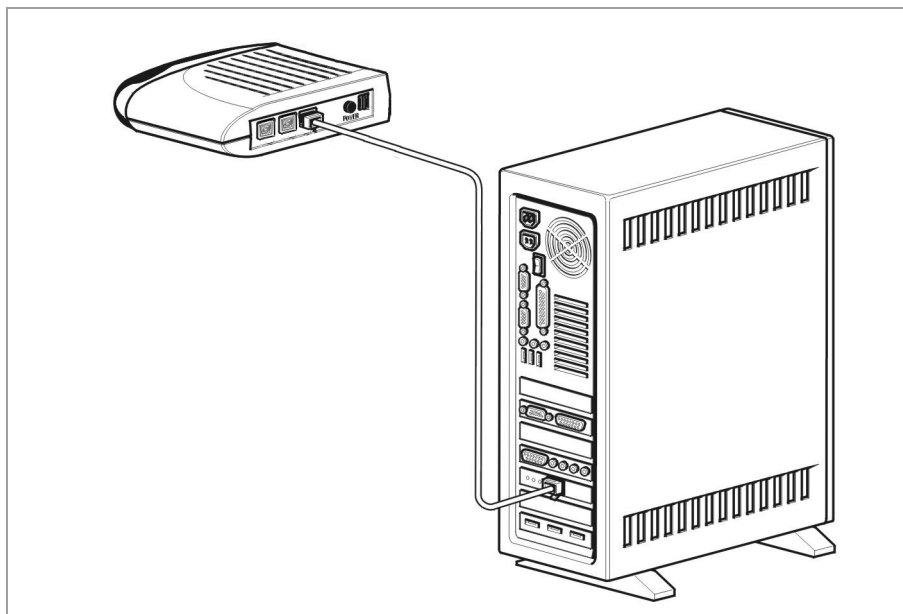
Connecting via USB

Please note:

- ◆ Please do not plug the cable to the USB port of your PC, before you have installed the USB driver from the attached CD-ROM. How to install the USB driver on the specific operating system of your PC is documented in the chapter "Installing USB driver" on page 16. Plug the cable to the USB port of your PC not earlier than when you are asked to do so or when USB driver installation is completed.
- ◆ You cannot use the connection via USB, when you are using the Mac operating system on your PC. In this case please use the connection via Ethernet.

To connect the Alice Gigaset ADSL via USB, please perform the following steps.

1. Attach one end of the USB cable with RJ-45 connector to the USB port of your Alice Gigaset ADSL.
2. Connect the other end of the cable to the USB port of the PC.

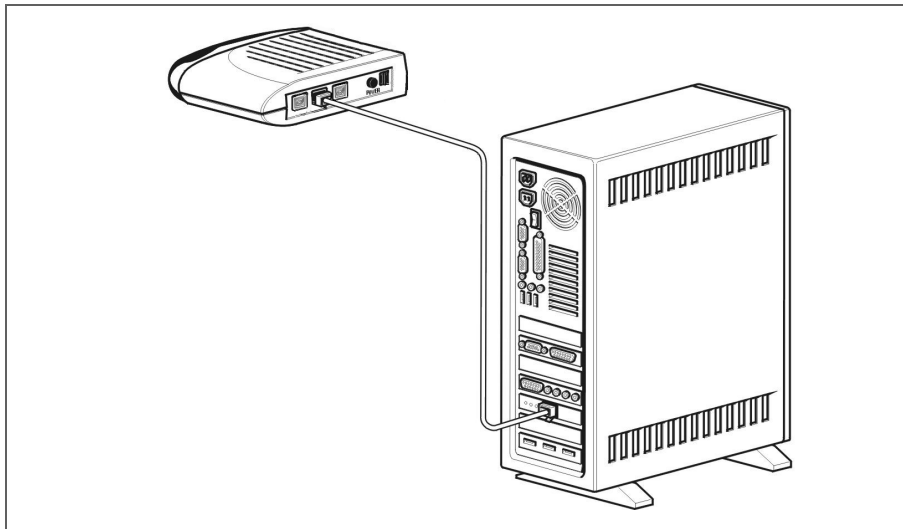


First Steps

Connecting via Ethernet

To connect the Alice Gigaset ADSL via Ethernet, please perform the following steps.

1. Attach one end of the Ethernet cable with RJ-45 connector to the LAN port of your Alice Gigaset ADSL.
2. Connect the other end of the cable to the Ethernet port of your PC.



Connecting to the splitter

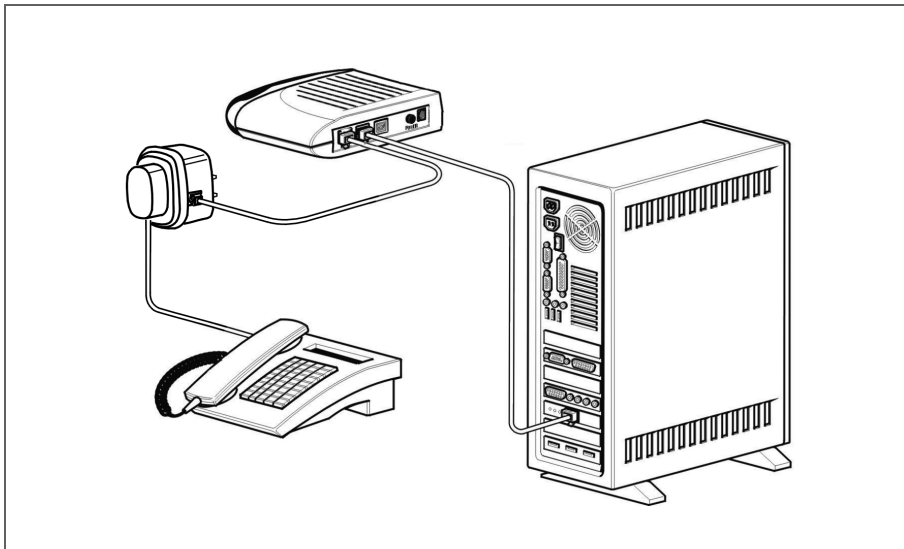
The splitter you use to connect your modem depends on the telephone outlet you have at your disposal. There are two different variants of splitters:

- ◆ three-pole splitter and
- ◆ RJ splitter.

Three-pole splitter

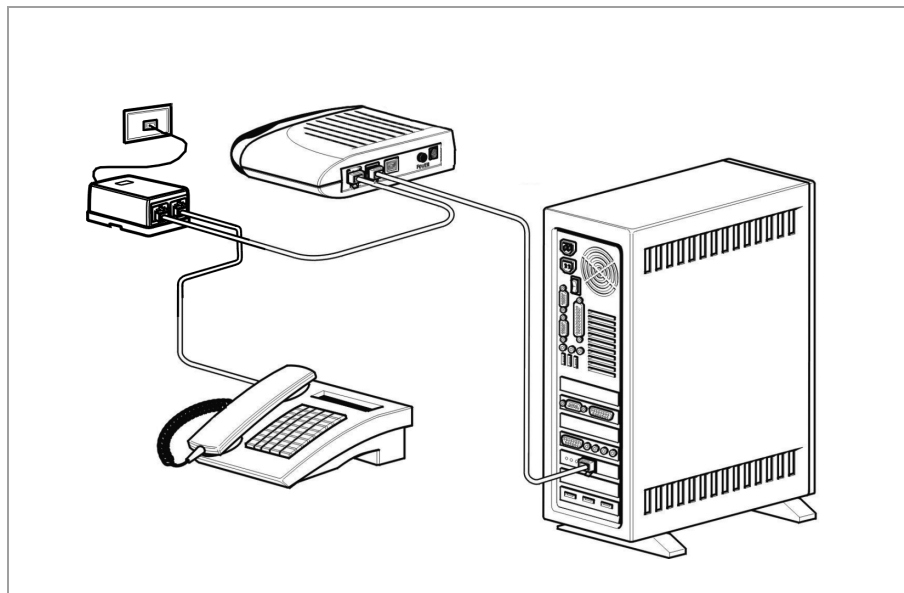
1. Put the three-pole splitter between the three-pole telephone outlet and the telephone plug.
2. Attach one end of the RJ-11 ADSL line cable to the ADSL port of the Alice Gigaset ADSL.
3. Connect the other end of the cable to the modem outlet on the splitter.

First Steps



RJ splitter

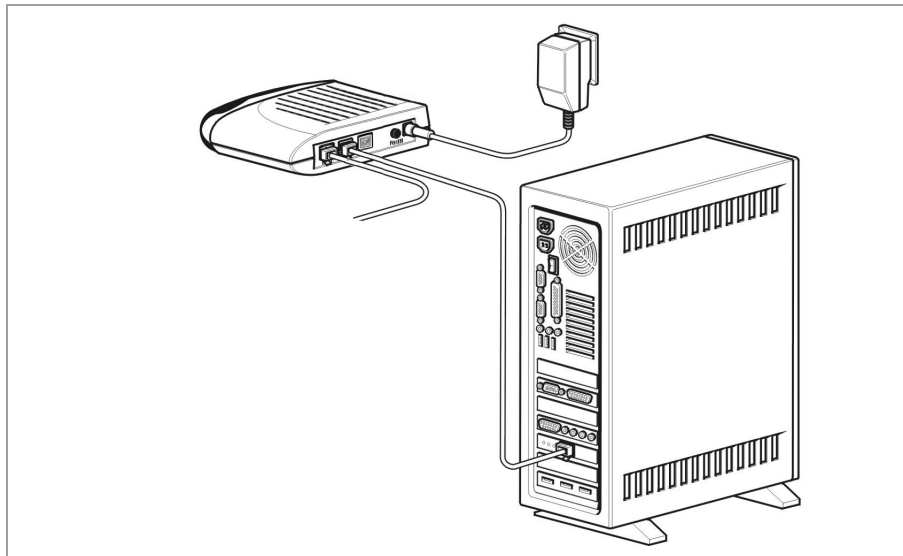
1. Connect the cable of the RJ splitter to the RJ outlet.
2. Attach one end of the RJ-11 ADSL line cable to the ADSL port of the Alice Gigaset ADSL.
3. Connect the other end of the cable to the modem outlet of the RJ splitter.



First Steps

Powering on the Alice Gigaset ADSL

1. Connect the supplied power adapter to the PWR port of your Alice Gigaset ADSL.
2. Plug the other end to a power outlet.
3. Turn on the power switch.



Final steps

- ◆ Check the network configuration of your PC to ensure that it will work together with the Alice Gigaset ADSL properly (see "Configuring network connection" on page 25).
- ◆ Setup and configure the connection with the Internet.

For the operating systems Windows XP and Mac OS V10 a special PPPoE client is part of the operating system. For other operating systems a special PPPoE client has to be installed from the CD-ROM. How to install and configure the PPPoE client and PPPoE connection is documented in the Enternet300 description.

The PPPoE client will require certain access data which were provided to you separately by Telecom Italia. You need these data to pass through Telecom Italia into the internet.
- ◆ As the last step you can then start the web browser and e.g. surf the internet. If the internet access does not work, please check the LEDs of the device, have a look at the Appendix "Fault tracing" on page 45 or try to check the status page of the Alice Gigaset ADSL. The status page can be reached with following HTTP address: 192.168.1.1.

Please find more information about the status page in chapter "Alice Gigaset ADSL status information" on page 43.

Installing USB driver

Installing USB driver

Please note:

USB connection is possible for all Windows systems. The following chapter describes the installation for some operation systems as an example.

For Mac OS X the use of USB connection is not available.

If you do not use the USB connection for your Alice Gigaset ADSL please skip this section.

If the Alice Gigaset ADSL is connected to a PC via USB interface, you will be prompted for the USB drivers when plugging the USB cable to the PC. Refer to the relevant operating system to install the USB drivers.

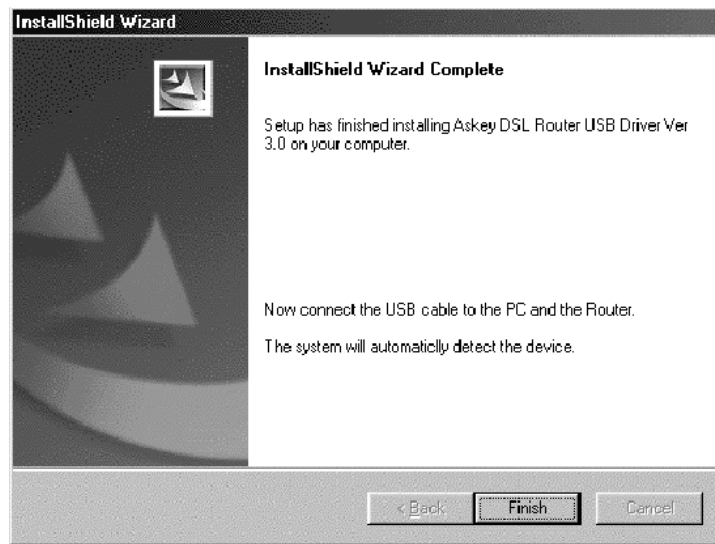
For Windows 98 SE, ME

- ➔ Run the USB installation program from the CD provided by your modem package. An InstallShield Wizard as the following will appear. Please wait for a moment.



- ➔ When the following screen appears, click **Finish**.

Installing USB driver



➔ Plug the USB cable between your modem and PC.

Please note:

If the USB device is not detected, check the USB cable between the PC and the device. Also verify that the device is power on.

The USB driver installation finished. You can use the modem now.

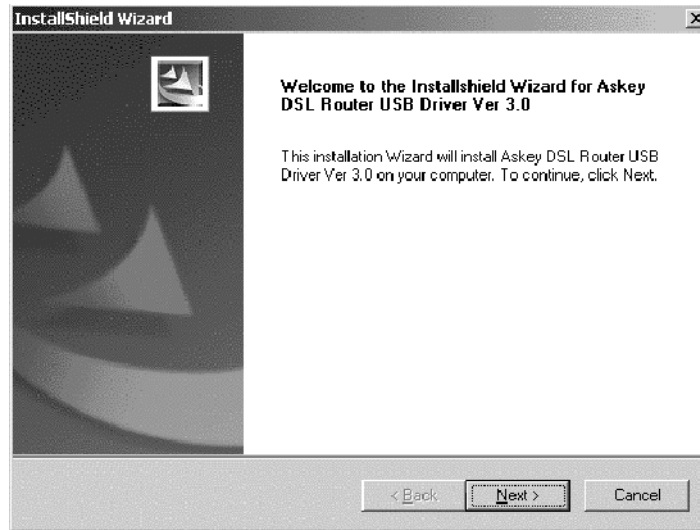
For Windows 2000

➔ Run the USB installation program from the CD provided by your modem package.
An InstallShield Wizard as the following will appear. Please wait for a moment.



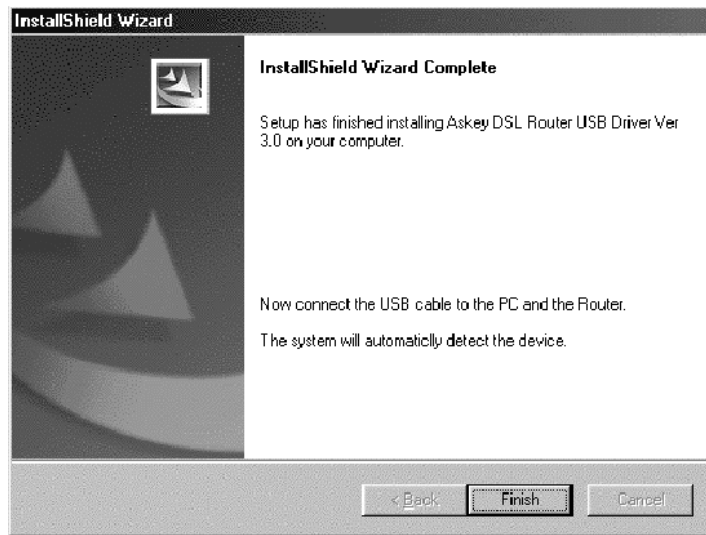
➔ When the following screen appears, click **Next** for next step.

Installing USB driver



Installing USB driver

➔ When the following screen appears, click **Finish**.



➔ Plug the USB cable between your modem and PC.

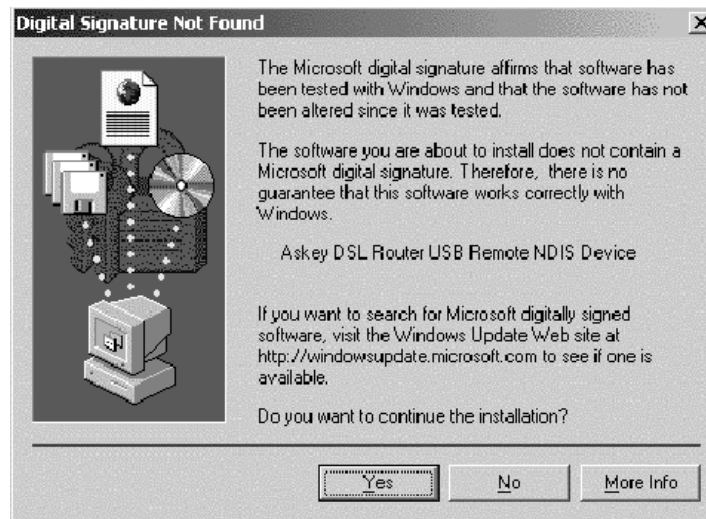
Please note:

If the USB device is not detected, check the USB cable between the PC and the device. Also verify that the device is power on.

The system will detect the USB driver automatically. When the system detects it, a dialog as the following will appear.

Installing USB driver

➔ Click **Yes** for next step.



Now, the system will copy the proper files for this modem.



When the file copying finished, the dialog above will close. Now the USB driver is installed properly. You can use the modem.

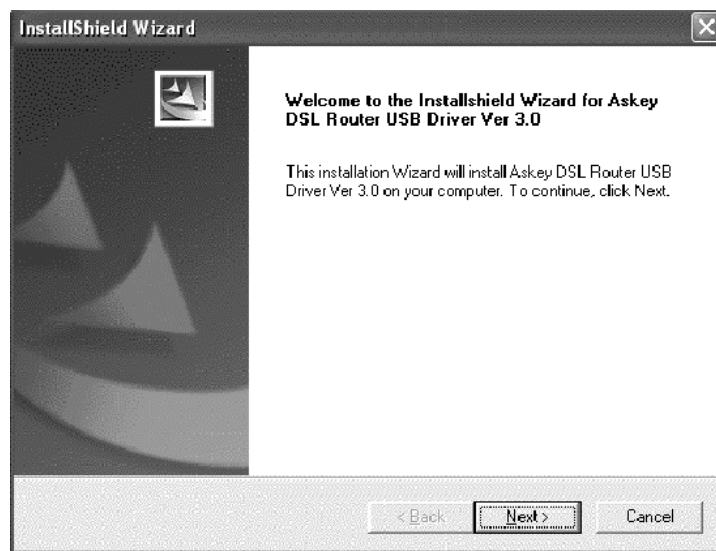
Installing USB driver

For Windows XP

- ➔ Run the USB installation program from the CD provided by your modem package.
An InstallShield Wizard as the following will appear. Please wait for a moment.

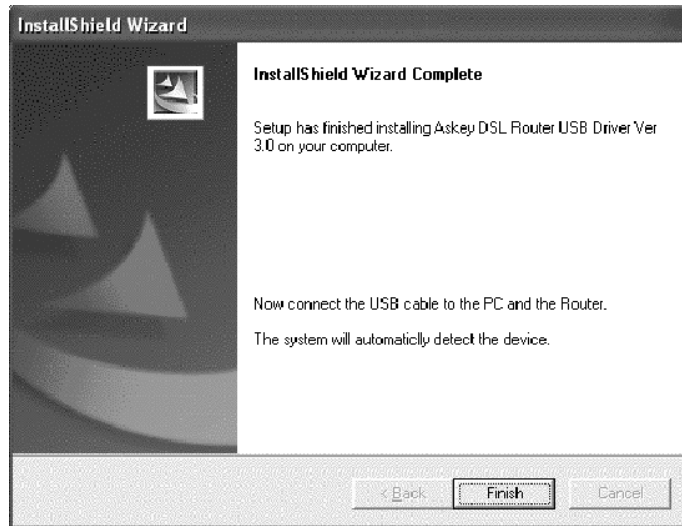


- ➔ When the following screen appears, click **Next** for next step.



Installing USB driver

➔ When the following screen appears, click **Finish**.



➔ Plug the USB cable between your modem and PC.

Please note:

If the USB device is not detected, check the USB cable between the PC and the device. Also verify that the device is powered on.

The system will detect the USB driver automatically. When the system detects it, a dialog as the following will appear.

➔ Click **Next** for next step.

Installing USB driver



The system is trying to find proper driver for your modem and copying the files automatically.



➔ After the file copying is finished, the following dialog will appear. Click **Finish**.

Installing USB driver



You can use the modem now.

Configuring network connection

Configuring network connection

To access the Alice Gigaset ADSL, the PC must meet the following requirements:

- ◆ The Alice Gigaset ADSL must be connected with the Ethernet network interface or the USB port.
- ◆ The PC must have TCP/IP installed.
- ◆ The client PC must be set to obtain an IP address automatically.
- ◆ A web browser must be installed: Internet Explorer 5.5 or later.

The Alice Gigaset ADSL is configured with the default IP address of 192.168.1.1 and subnet mask of 255.255.255.0.

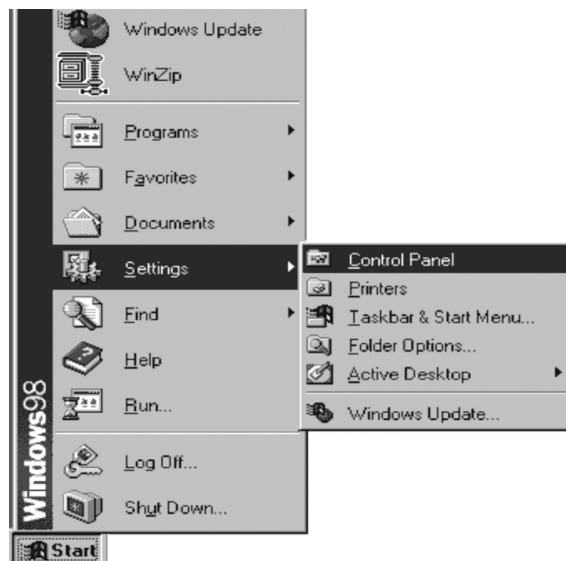
In most cases your PC is already configured to meet the requirements listed above. You can use your modem at once.

If TCP/IP is not already installed or the network configuration is set to have fixed IP addresses, follow the steps below for network configuration. On the following pages network configuration is described for some operating systems as an example.

For Windows 98 SE and Windows ME

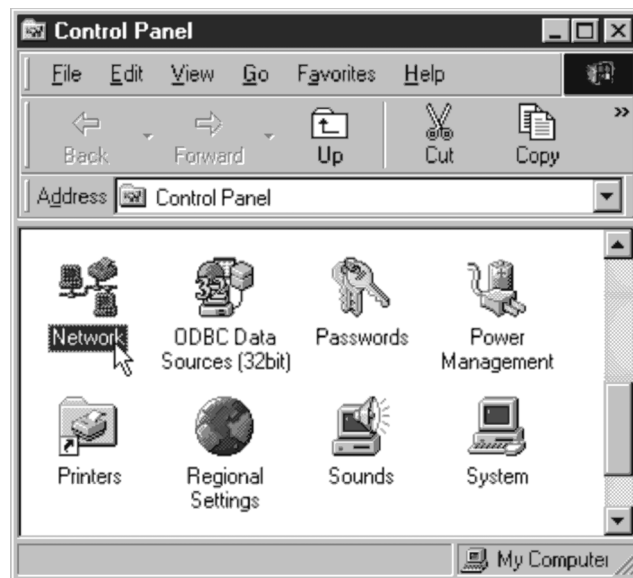
TCP/IP installation

➔ Click on the **Start** menu, point to **Settings** and click on **Control Panel**.



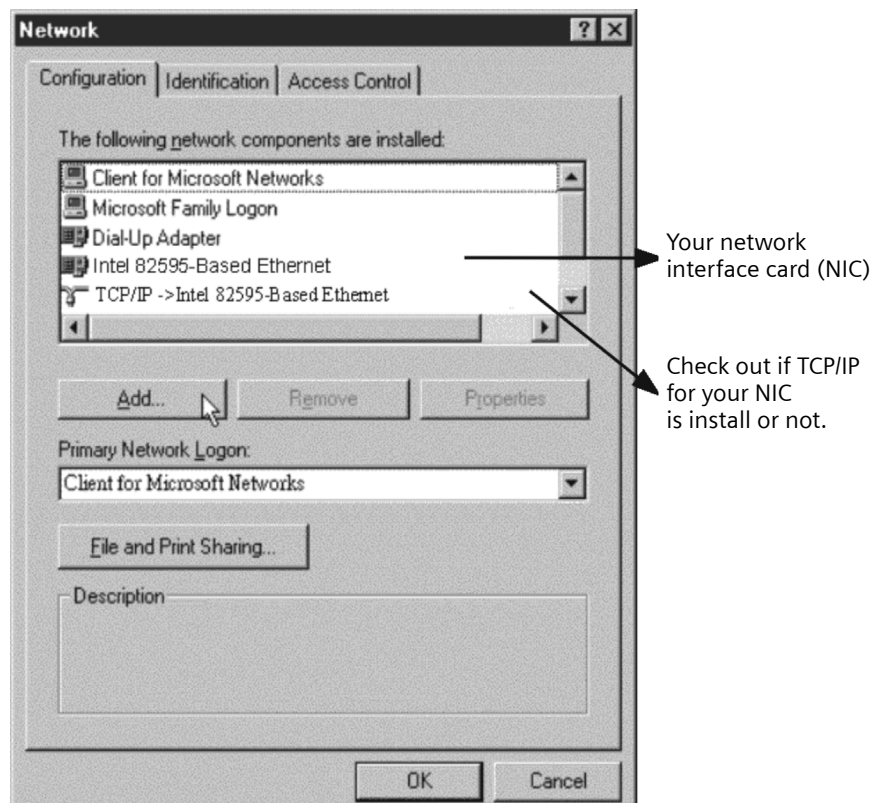
Configuring network connection

➔ Double-click the **Network** icon.

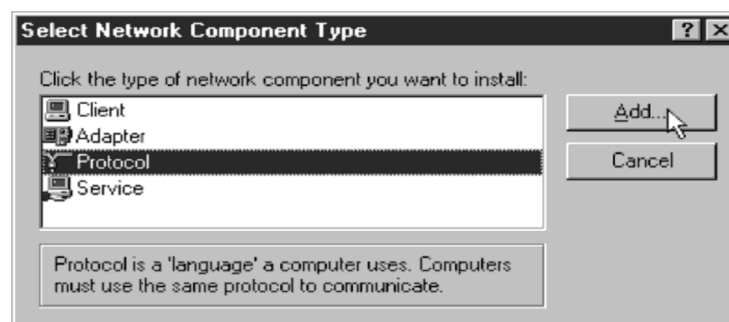


Configuring network connection

- ➔ The **Network** window appears. On the **Configuration** tab, check out the list of installed network components.
- Option 1: If you have no TCP/IP protocol, click **Add**.
 - Option 2: If you have TCP/IP protocol, go to step 6 on page 28.

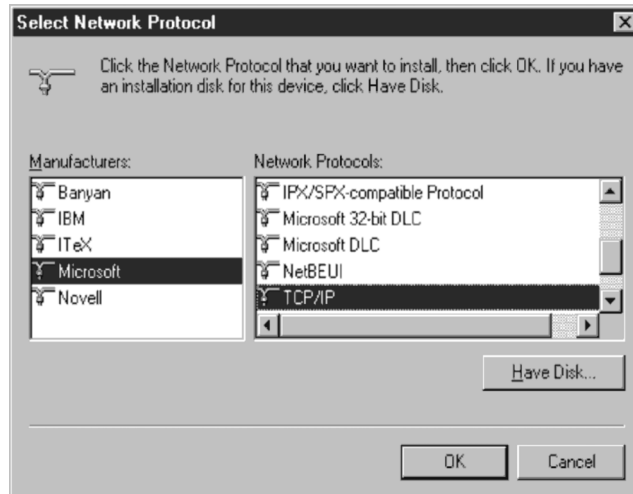


- ➔ Highlight **Protocol** and click **Add**.

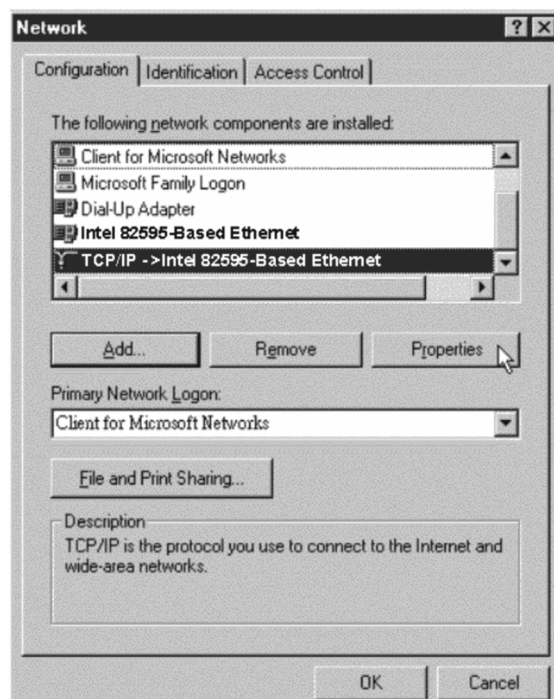


Configuring network connection

- ➔ On the left side of the windows, highlight **Microsoft** and then select **TCP/IP** on the right side. Then click **OK**.



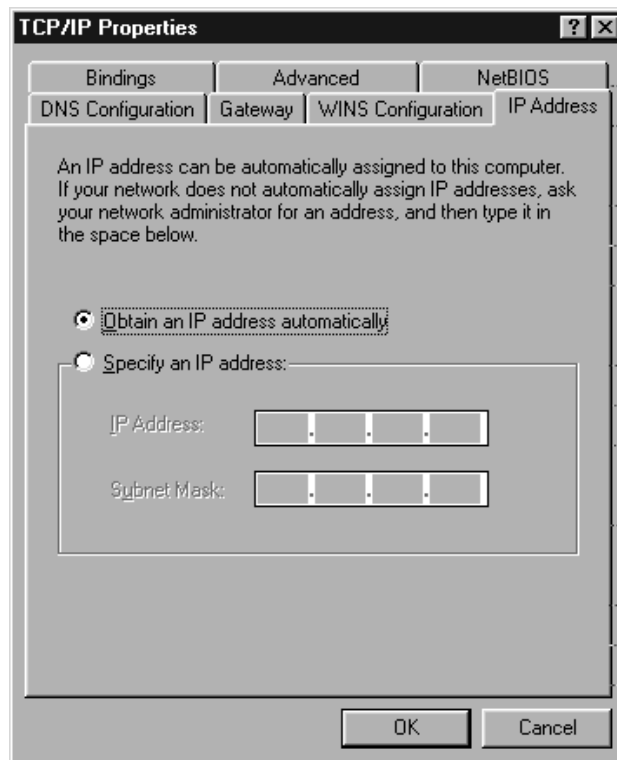
- ➔ When returning to the **Network** window, highlight **TCP/IP protocol** for your network interface card and click **Properties**.



Configuring network connection

Obtaining the IP address automatically

➔ Take the **IP Address** tab.



If **Obtain an IP address automatically** has already been activated, your PC is already configured for DHCP.

➔ Click on **Cancel** and close the next windows with **OK** to run network configuration. You may be prompted to insert your Windows Installation CD. Follow the instructions in the installation procedure.

Once the copying procedure is completed, you will be prompted to reboot your system. Click on **Yes**. The computer will then be rebooted.

➔ If **Obtain an IP address automatically** has not been activated, activate this option now.

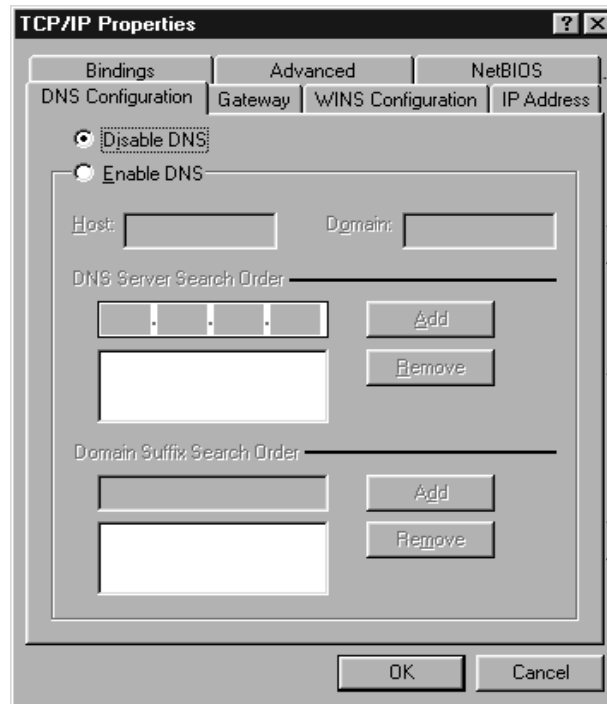
Configuring network connection

➔ Open the *Gateway* tab and remove any entries from the **Installed gateways** list.



Configuring network connection

- ➔ Open the **DNS Configuration** tab. Select **Disable DNS**.



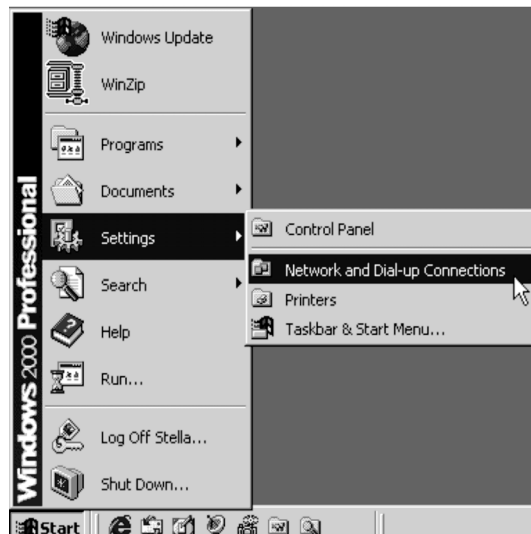
- ➔ Click on **OK**.
- ➔ Finish the network configuration with **OK**.
 - You may be prompted to insert your Windows Installation CD. Follow the instructions in the installation procedure.
 - Once the copying procedure is completed, you will be prompted to reboot your system.
- ➔ Click on **Yes**. The computer will then be rebooted.

Configuring network connection

For Windows 2000

TCP/IP installation

- ➔ From the Start menu, point to **Settings** and then click **Network and Dial-up Connections**.

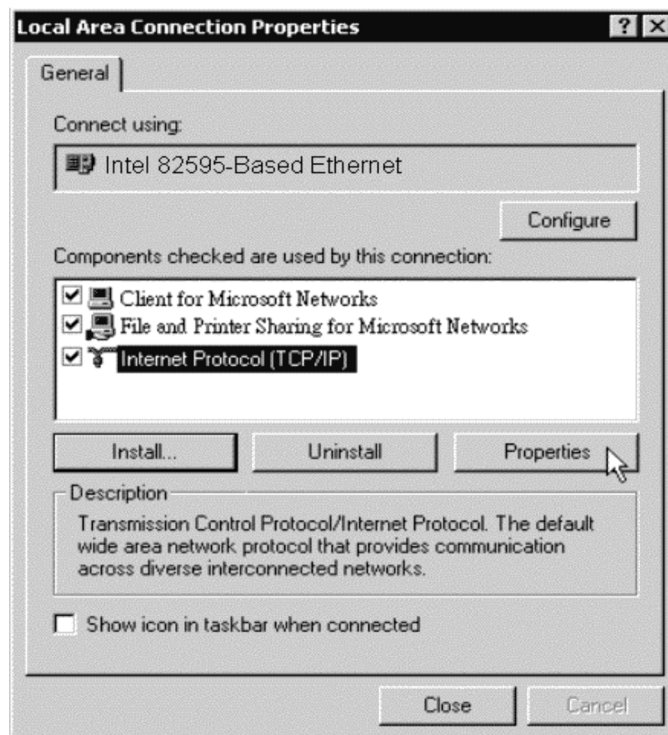


- ➔ Right-click the **Local Area Connection** icon and then click **Properties**.



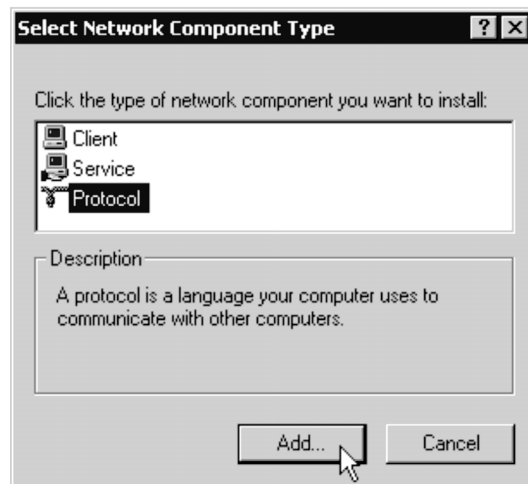
Configuring network connection

- ➔ On the **General tab**, check out the list of installed network components.
- Option 1: If you have no TCP/IP Protocol, click **Install**.
 - Option 2: If you have TCP/IP Protocol, go to step 6 on page 35.

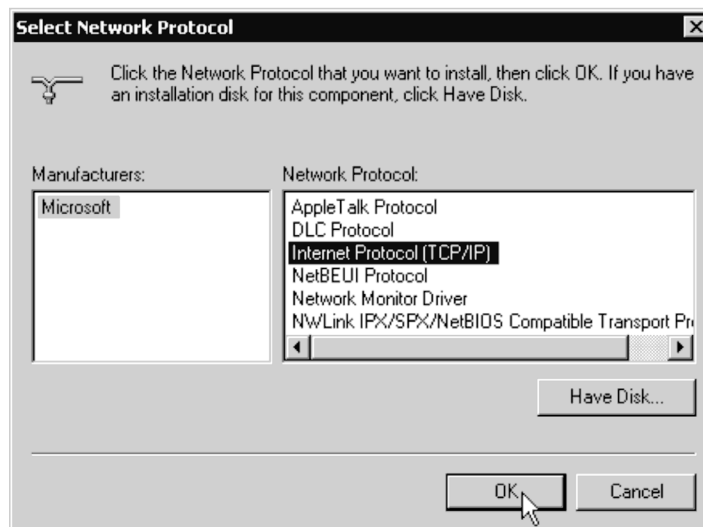


Configuring network connection

➔ Highlight **Protocol** and then click **Add**.

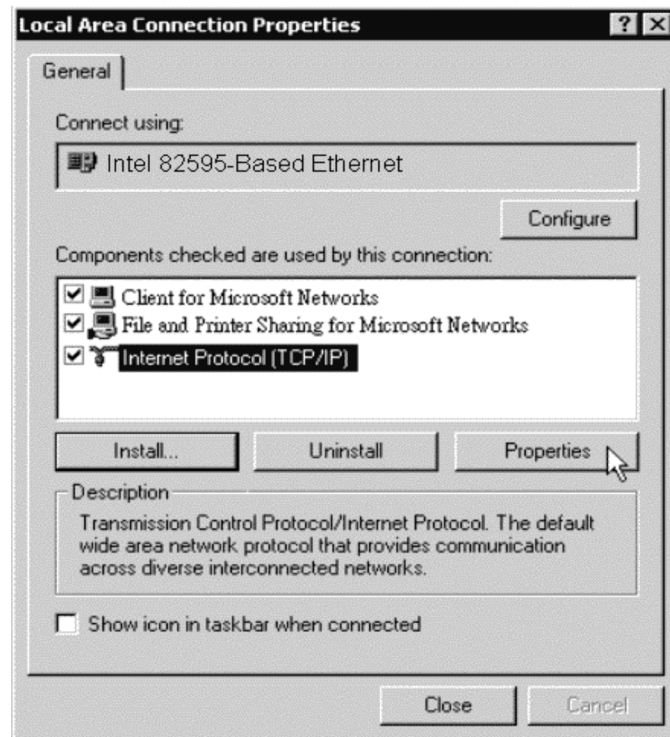


➔ Click **Internet Protocol (TCP/IP)** and then click **OK**.



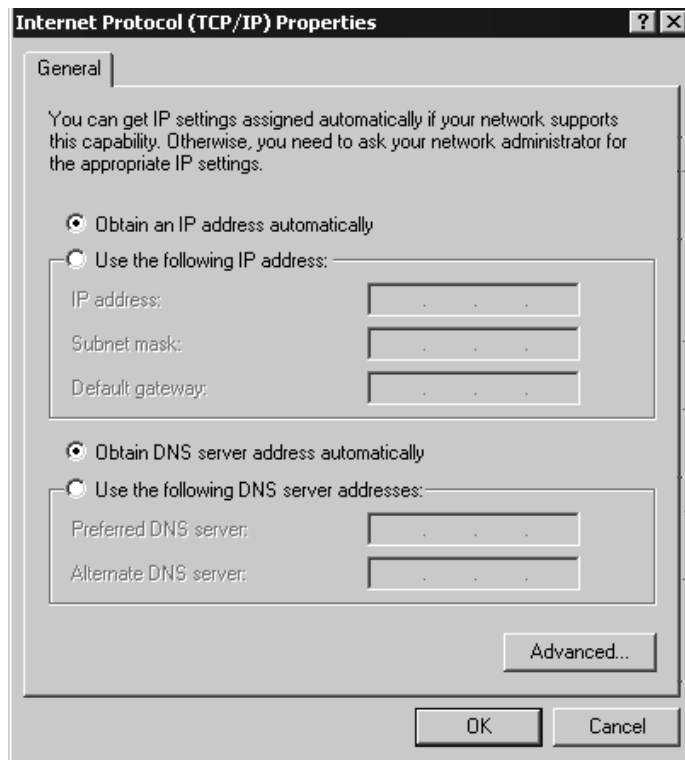
Configuring network connection

- ➔ When returning to **Local Area Connection Properties** window, highlight **Internet Protocol (TCP/IP)** and then click **Properties**.



Configuring network connection

Obtaining the IP address automatically



If the **Obtain an IP address automatically** and **Obtain DNS server address automatically** options have already been activated, your PC is already configured for DHCP.

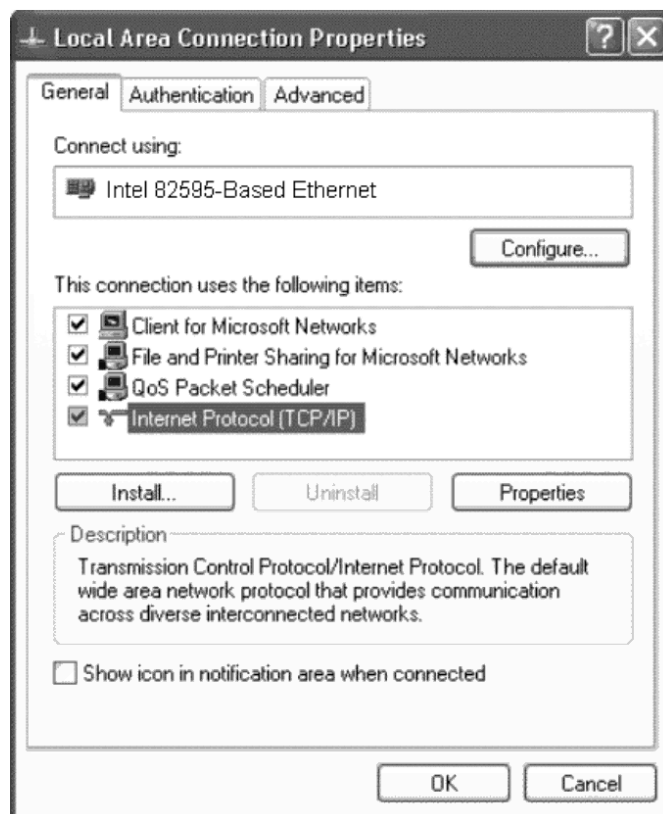
- ➔ Click on **Cancel** and close the next windows with **OK** to save your network configuration.
- ➔ If the **Obtain an IP address automatically** and **Obtain DNS server address automatically** options have not been activated, activate them now and click on **OK**. Close the following screens.

Configuring network connection

For Windows XP

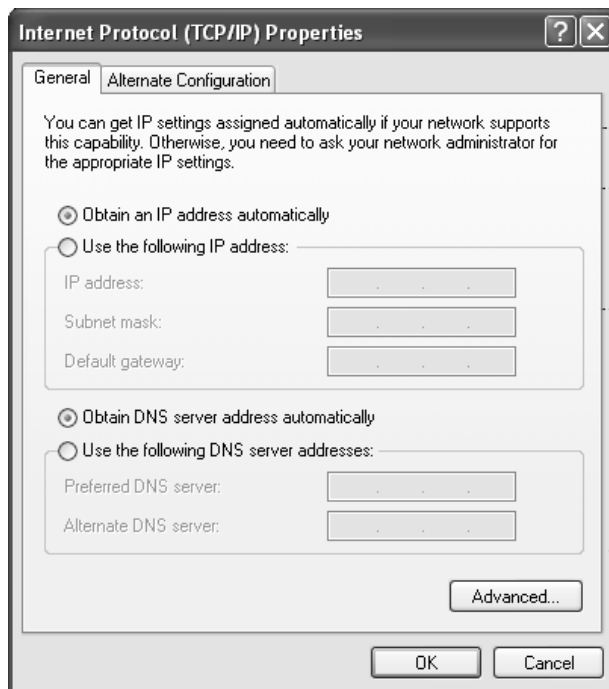
Starting TCP/IP configuration

- ➔ From the **Start** menu, point to **Control Panel** and then click **Network and Internet Connections**.
- ➔ Click **Network Connection** and then click **Properties**.
- ➔ On the **General** tab, check out the list of installed network components.
 - Option 1: If you have no TCP/IP Protocol, click **Install**.
 - Option 2: If you have TCP/IP Protocol, go to step 6 on page 37.
- ➔ Highlight Protocol and then click Add.
- ➔ Click **Internet Protocol (TCP/IP)** and then click **OK**.
- ➔ On the **Local Area Connection Properties** window, highlight **Internet Protocol (TCP/IP)** and then click **Properties**.



Configuring network connection

Obtaining the IP address automatically



If the **Obtain an IP address automatically** and **Obtain DNS server address automatically** options have already been activated, your PC is already configured for DHCP.

- ➔ Click on **Cancel** and close the next windows with **OK** to save your network configuration.
- ➔ If the **Obtain an IP address automatically** and **Obtain DNS server address automatically** options have not been activated, activate them now and click on **OK**. Close the following screens.

Configuring network connection

For Mac OS X

Starting network configuration

➔ Choose **Preferenze di Sistema** from the **Apple** Menu.

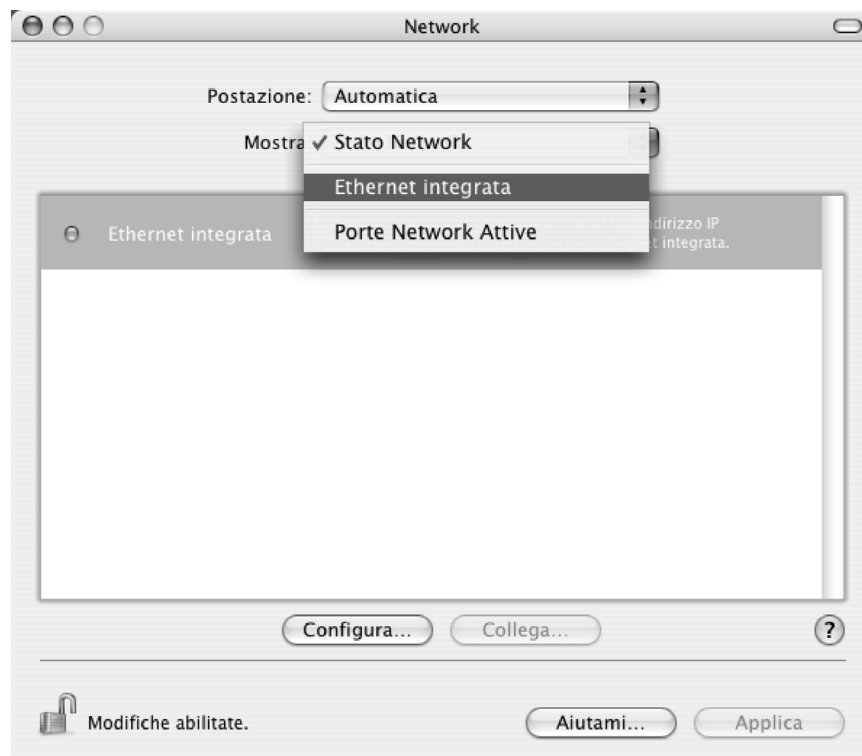


➔ Choose **Network** from the **View** menu.



Configuring network connection

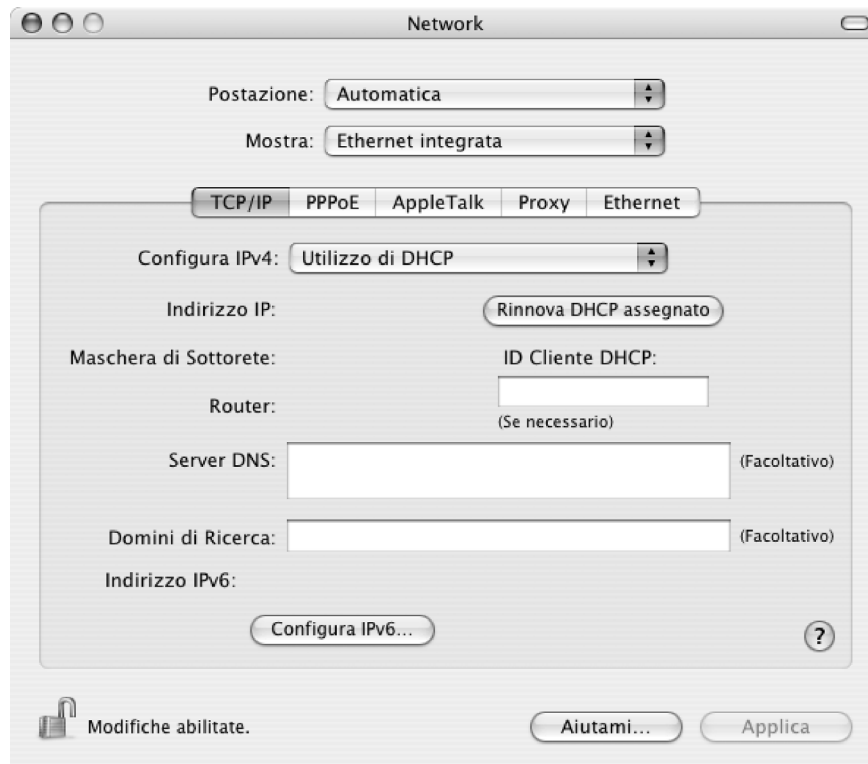
- ➔ Choose **Ethernet integrata** from the **Mostra** pop-up menu
(Prior to Mac OS X 10.1: choose **Ethernet integrata** from the **Configura** menu).
If necessary, click **Modifiche disabilitate** beforehand to activate the configuration.



Configuring network connection

Obtaining the IP address automatically

➔ Choose **Utilizzo di DHCP** from the **Configura IPv4** pop-up menu.



➔ Click **Applica** to apply the new network settings. The next time you connect to your Ethernet modem, an IP address will be obtained automatically

Configuring network connection

Network

Postazione: Automatica

Mostra: Ethernet integrata

TCP/IP PPPoE AppleTalk Proxy Ethernet

Configura IPv4: Utilizzo di DHCP

Indirizzo IP: 192.168.1.2 Rinnova DHCP assegnato

Maschera di Sottorete: 255.255.255.0 ID Cliente DHCP:

Router: 192.168.1.1 (Se necessario)

Server DNS: (Facoltativo)

Domini di Ricerca: (Facoltativo)

Indirizzo IPv6: fe80:0000:0000:0000:020a:95ff:fea1:2bea

Configura IPv6...

Modifiche abilitate. Aiutami... Applica

Please note:

You need to deactivate PPPoE in order to access the status page of your Ethernet modem.

Alice Gigaset ADSL status information

Alice Gigaset ADSL status information

Once your PC is properly configured, you can access the status page of your Alice Gigaset ADSL to get information on the configuration and status of the device.

Opening the Status page

Please proceed as follows:

- ➔ Start your web browser and type the default IP address of the Alice Gigaset ADSL in the URL field: 192.168.1.1.

Status information

The status pages give some information on the current configuration of the Alice Gigaset ADSL and the current status for the ADSL connection.

The following screenshot will be replaced by a another one with real data when available.

Stato Modem			
Telecom Italia			
Collegamento PC	Stato	Indirizzo IP	Indirizzo MAC
Collegamento Ethernet	[1]	[2]	[3]
Collegamento USB	[4]	[2]	[3]
Linea ADSL			
Stato linea ADSL	[5]		
Velocità down link (kbps)	nnn		
Velocità up link (kbps)	nnn		
Modalità ATM	[6]		
VPI/VCI	8/35		
Protocollo-Incapsulamento	Bridge LLC/SNAP		
Stato connessione PPPoE	[7]		
Identificativi Prodotto			
Nome e ID	[8]		
Versione Software	[9]		
Versione Firmware ADSL	[9]		
Statistiche traffico	Bytes Trasmessi	Bytes Ricevuti	
Traffico LAN	[10]	[10]	
Traffico ADSL	[10]	[10]	
Aggiorna stato modem		Azzerà statistiche	

Alice Gigaset ADSL status information

PC connection

For the PC connected to the Ethernet (LAN) respective USB port of the Alice Gigaset ADSL the following information is output:

Status	Indicates if an PC is connected or not at the corresponding port.
IP Address	IP address of the connected PC
MAC address	MAC address (hardware address) of the connected PC

ADSL Line

For the ADSL line the following information is shown:

ADSL line status	Indicates, if the ADSL line currently is connected, not synchronized, or synchronizing.
Down link speed	Shows the available downstream line rate.
Up link speed	Shows the available upstream line rate.
ATM mode	Shows the used ATM mode, e.g. G.dmt, G.lite, T1.413.
VCI / VPI	Shows the VPI and VCI value used for the ADSL connection.
Protocol & Encapsulation	Shows the protocol used for your Internet connection and the encapsulation type.
PPPoE status connection	Indicates, if a PPPoE Connection is established (connected) or not (not connected) This information is optional and only available if the CPE recognizes PPPoE status session opened by end-user client.

Product identification

Gives some information on the Alice Gigaset ADSL's firmware:

Name & ID	Shows the product name and identification.
Software version	Shows the current software version.
ADSL Firmware version	Shows the current ADSL firmware version

Traffic Statistics

This table shows the records of data going through the LAN (referred to the active Ethernet or USB connection) and the DSL interface. For each interface, cumulative totals are displayed for received and transmitted bytes.

LAN Traffic	Shows the traffic via the Ethernet (LAN) or USB interface
ADSL Traffic	Shows the traffic via the DSL interface.

➔ To update all status and statistics information displayed on this page, click on **Update all status & stats**.

➔ To reset the statistics counters, click on **Reset stats counter**.

Appendix

Fault tracing

If the suggested solutions in this section do not resolve your issue, contact your system administrator or Internet service provider.

Symptom	Possible cause and solutions
Power lamp does not light up.	No power supply. <ul style="list-style-type: none">➔ Check whether the mains adapter is connected to the Alice Gigaset ADSL and a power outlet.➔ Check whether the power outlet and the mains adapter are working properly. If the mains adapter is not working properly, please get in touch with our customer service unit.
The LAN LED does not light up.	No LAN connection <ul style="list-style-type: none">➔ Make sure that the connected device is switched on.➔ Check whether the Ethernet cable is plugged in.➔ Check that you are using the right cable type (CAT 3, 4 or 5) and that the cable is not too long (100 m).➔ Check that the network card on the connected device and the cables are not defective. If necessary, replace a defective network card or cable.➔ Use the Windows device manager (My Computer - Properties) to check whether the network card is functioning. If you see a red cross or a question mark, then the driver may not have been installed or there is a resource conflict. Follow the Windows instructions to remedy the problem.
The DSL LED is blinking.	The modem is synchronizing with the DSL network. This can take some minutes. <ul style="list-style-type: none">➔ Wait, until the modem has finished synchronizing. The DSL LED then should be light up constantly.

Appendix

Symptom	Possible cause and solutions
You cannot access the Internet.	<p>If you use the LAN interface:</p> <p>➔ Check the physical connection between the Alice Gigaset ADSL and the LAN.</p> <p>If the LAN LED on the front panel is off or keeps blinking, there may be problems on the cable connecting to the Alice Gigaset ADSL.</p> <p>At the DOS prompt, ping the IP address of the Alice Gigaset ADSL, e.g, ping 192.168.1.1.</p> <p>If the following response occurs:</p> <p>Relay from 192.168.1.1 bytes=32 time=100ms TTL=253</p> <p>Then the connection between the Alice Gigaset ADSL and the network is OK.</p> <p>If you get a failed ping with the response of:</p> <p>Request time out</p> <p>Then the connection is fail. Check the cable between the Alice Gigaset ADSL and the network.</p> <p>If you use the USB interface:</p> <p>➔ Check the physical connection between the Alice Gigaset ADSL and the USB interface.</p>
The Alice Gigaset ADSL cannot be reached by a ping command.	<p>➔ Make sure that TCP/IP has been installed and configured on the PC.</p> <p>➔ Check that the IP address has been properly configured. In most cases, you can use the Alice Gigaset ADSL's DHCP function to assign a dynamic address to the PC. In this case, you have to configure the TCP/IP settings of the PC so that it obtain the IP address automatically.</p> <p>If you configure the IP address in the LAN manually, remember to use the subnet mask 255.255.255.x. This means that the first three parts of the IP address on the PC and the modem have to be identical. The modem also has to be configured as DNS server and as default router.</p>
No connection to the modem's configuration environment	<p>➔ Use the ping command to check whether you can establish a network connection to the Alice Gigaset ADSL.</p> <p>➔ Check the network cable between the PC you want to use to administer the modem and the Alice Gigaset ADSL.</p> <p>➔ Make sure that you are using the correct IP address (see above).</p>
Password forgotten or lost???	<p>➔ Reset the modem (see page 10).</p> <p>Warning: Please bear in mind that this will restore all configuration settings to the factory settings.</p>

Appendix

Uninstalling USB driver

If you don't want to use the USB port of your PC any longer for connecting the Alice Gigaset ADSL to your PC you can uninstall the USB driver software as follows. The uninstall procedure is shown in the following for some operating systems as an example.

For Windows 98 SE, ME

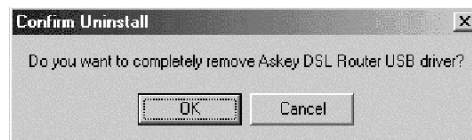
- ➔ Run the USB installation program from the CD provided by your router package.

The following screen will appear.



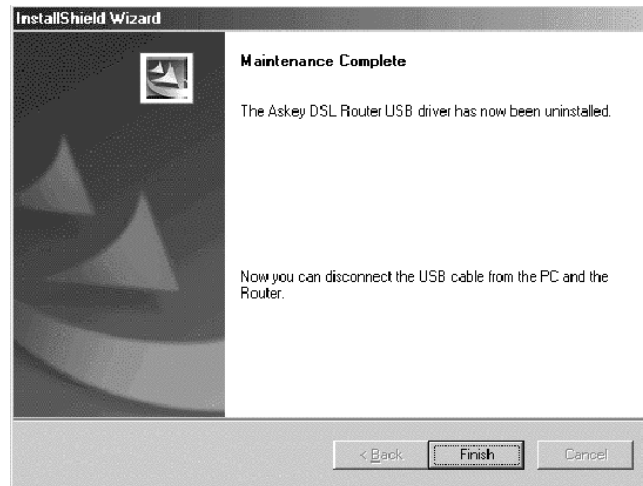
The system will search all the USB drivers on your computer. Please wait for a minute. Then, a dialog appears to ask you confirm if you want to remove the USB driver or not.

- ➔ Please click **OK**.



Appendix

When the following screen appears, the USB driver is removed successfully.



➔ Unplug the USB cable between your router and you PC.

For Windows 2000

➔ Run the USB installation program from the CD provided by your router package.
The following screen will appear.



A dialog appears to ask you confirm if you want to remove the USB driver or not.

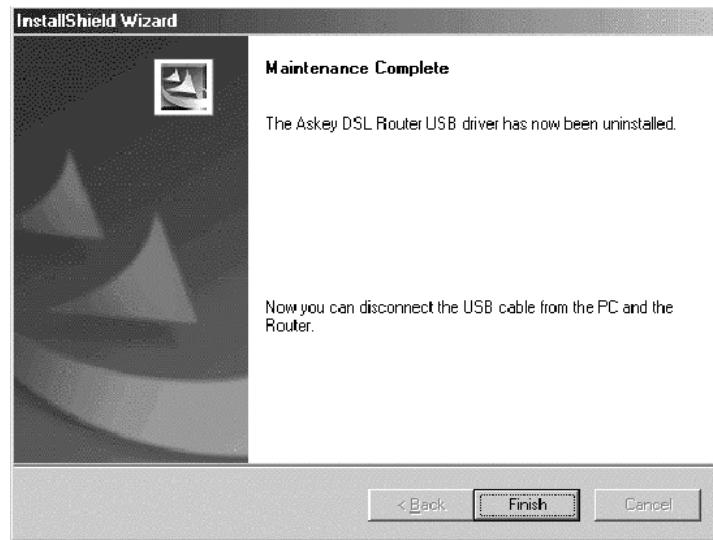
➔ Please click **OK**.



When the following screen appears, the USB driver is removed successfully.

Appendix

➔ Click **Finish**.



➔ Unplug the USB cable between your router and you PC.

For Windows XP

➔ Run the USB installation program from the CD provided by your router package.
The following screen will appear.



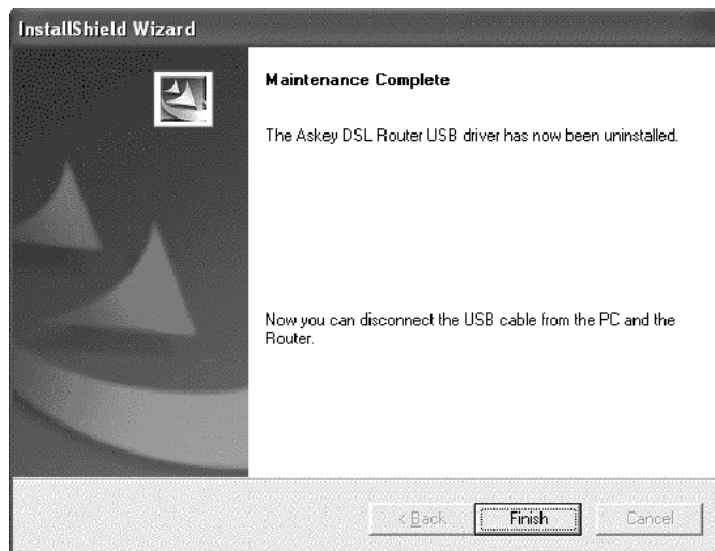
A dialog appears to ask you confirm if you want to remove the USB driver or not.

Appendix

➔ Please click **OK**.



When the following screen appears, the USB driver is removed successfully.



➔ Unplug the USB cable between your router and you PC

Appendix

Specifications

ADSL Compliance	ANSI T1.413 Issue 2, ITU G.992.1 Annex A (G.dmt), ITU G.992.1 Annex B (UR2), ITU G.992.2 Annex A (G.lite), ITU G.994.1 (G.hs)
Interfaces	DSL: RJ11 LAN: RJ-45 for IEEE 802.3 10/100 Base-T, auto-sensing Ethernet USB: USB V1.1, 12 Mbps
LED Displays	Power, Test, LAN, USB, DSL
Operating Environment	
Temperature	Operating temperature 0 to 45 °C Storage temperature -10 to 70 °C
Humidity	5% to 80% (non condensing)

Intended Use

This device is intended for use in Italy.

Type Approval

Special conditions prevailing in Italy have been taken into consideration.

The Alice Gigaset ADSL complies with the R&TTE Guidelines, as shown by the CE mark.

Extract from the original declaration

,We Siemens AG, declare that the above mentioned product is manufactured according to our Full Quality Assurance System certified by CETECOM ICT Services GmbH in compliance with Annex V of the R&TTE-Directive 99/05/EC. The presumption of conformity with the essential requirements regarding Council Directive 99/05/EC is ensured.'

(The section 'Extract from the original declaration' shall stay in English and shall not be translated into Italian.)

The Declaration of Conformity (DoC) has been signed. You can obtain a copy of the original DoC by referring to Telecom Italia if you require.

CE 0682

Index

A

Access data	15
ADSL - Asymmetric Digital Subscriber Line	
7	
ADSL firmware version.	44
ADSL line status.	44
ADSL traffic	44
Alice Gigaset ADSL.	7
ATM mode.	44

C

Connecting	
to the splitter	13
via Ethernet	13
via USB.	12
Connector	
Ethernet RJ-45	10
RJ-11	10
USB	10

D

DNS Configuration	
Windows 2000.	36
Windows 98.	31
Windows XP.	38
Downstream line rate	7, 44
DSLAM (Digital Subscriber Line Access	
Multiplexer)	7

E

Encapsulation type	44
Ethernet configuration	25
Ethernet interface	7
Ethernet RJ-45 connector.	10

F

Front panel	9
-------------------	---

G

Gateway	30
---------------	----

I

Internet connection	
encapsulation type	44
protocol	44
IP address	
modem.	25, 43
PC.	44
IP address, obtaining automatically	
Mac OS X	41
Windows 2000	36
Windows 98	29
Windows XP	38

L

LAN traffic	44
LED indicators	9
Line modes	7
Line rate	
downstream.	7
upstream	7

M

MAC address	
PC.	44

N

Network configuration	25
Mac OS X	39
Windows 2000	32
Windows 98, ME.	25
Windows XP	37

P

Package contents	8
PC	
IP address	44
MAC address.	44
Placing	10
Power switch	10
Powering on.	15
PPPoE client	15
Product name.	44

Index

R		Three-pole splitter	13
Rear panel	10	Trademarks	6
Reset button	10	Traffic statistics	44
RJ splitter	14	Troubleshooting	45
RJ-11 connector	10		
S		U	
Safety precautions	5	Upstream line rate	7, 44
Software version	44	USB connector	10
Splitter		USB driver installation	
connecting to	13	Windows 2000	17
RJ	14	Windows 98, ME	16
three-pole	13	Windows XP	21
Statistics counter	44	USB driver uninstall	
reset	44	Windows 2000	48
Status information	43	Windows 98, ME	47
update	44	Windows XP	49
Subnet mask		USB interface	7
modem	25	USB traffic	44
System requirements	8		
T		V	
TCP/IP configuration	25	VCI	44
Windows 2000	34	VPI	44
Windows 98, ME	27		
Windows XP	37	W	
		Web browser	43