

Speed Touch USB

Installation and User's Guide



Status Released

Change Note BD F aa 39808

Short Title CD-UG STUSB PPP

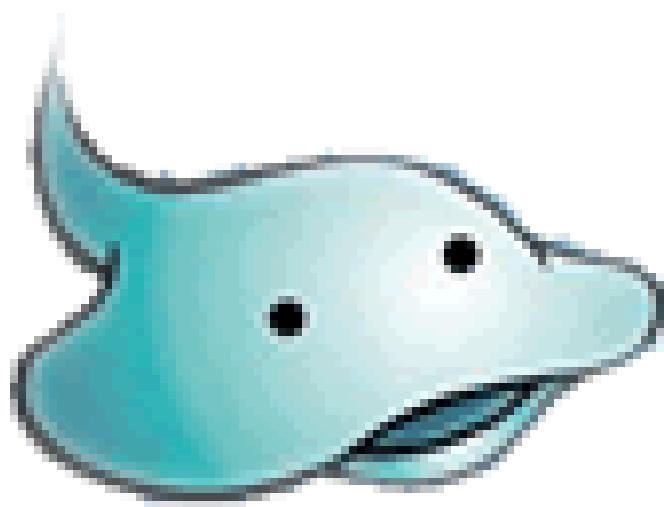
All rights reserved. Passing on and copying of this document, use and communication of its contents not permitted without written authorization from Alcatel.

Contents

1	Get Acquainted to the Speed Touch USB	7
1.1	First Steps	8
1.2	What You Need	9
1.3	Speed Touch USB Support	10
2	Speed Touch USB for Microsoft Windows	11
2.1	Installing the Speed Touch USB	12
2.2	Using the Speed Touch USB	18
3	Speed Touch USB for MAC OS	23
3.1	Installing the Speed Touch USB	24
3.1.1	Installation for Mac OS8.6 and Mac OS9.x	25
3.1.2	Installation for Mac OS X (Mac OS10.1)	29
3.2	Using the Speed Touch USB	35
3.2.1	Using the STUSB in Mac OS8.6 and Mac OS9.x	36
3.2.2	Using the STUSB in Mac OS X (Mac OS10.x)	39
AppendixA	Troubleshooting	43
AppendixB	Safety and Agency Regulatory Notices	45

Alcatel Speed Touch USB

Introduction



Welcome to the **Alcatel Speed Touch™USB** ADSL modem !

With the Award-winning **Alcatel Speed Touch™USB** Asymmetric Digital Subscriber Line (ADSL) modem surfing the Internet will become a whole new experience.

With download speeds up to 8 *Megabits per second* (Mbps), your **Alcatel Speed Touch™USB** is the ideal solution for exploring the Internet, high-speed interactive gaming and enjoying online audio and video streaming.

With the included installation CD-rom the installation of the **Alcatel Speed Touch™USB** is really straightforward : surfing the Internet is only a few clicks away.

Terminology

For readability, the **Alcatel Speed Touch™USB** will be referred to as **STUSB** further in this User's Guide.

Safety instructions

Prior to connecting the **Alcatel Speed Touch™USB**, read the Safety Instructions in appendix B.



The following words and symbols mark special messages throughout this document:

WARNING: indicates that failure to follow the directions could cause bodily harm or loss of life.

CAUTION: indicates that failure to follow the directions could result in damage to equipment or loss of information.

Trademarks

The following trademarks are used in this document:

- ▶ Speed Touch™ is a trademark of the Alcatel Company
- ▶ Windows™ and Internet Explorer™ are trademarks of Microsoft Corporation
- ▶ Apple® and Mac®OS are registered trademarks of Apple Computer Inc.
- ▶ Netscape® and Netscape Navigator® are registered trademarks of Netscape Communications Corporation.

Other products may be trademarks or registered trademarks of their respective manufacturers.

Service Provider

For readability, the term *Service Provider* (SP) will be used to designate all organizations which provide either DSL connectivity, Internet access or Corporate access, for example an *Internet Service Provider* (ISP).

STUSB documentation and software updates

Due to the continuous evolution of Alcatel ADSL technology, existing products are regularly upgraded.

For more information on the newest technological breakdowns, software upgrades, and documents, please consult the Alcatel web site at:

<http://www.alcatel.com>

<http://www.alcateldsl.com>

1 Get Acquainted to the Speed Touch USB

Introduction

This chapter will assist you in getting acquainted with the **STUSB** and will guide you through the first steps in preparing the **STUSB** for Internet connectivity.

1.1 First Steps

Delivery check

Check your **STUSB** package for the following items:

- ▶ The **Alcatel Speed Touch™USB**
- ▶ 2m DSL cable (RJ11/RJ11, RJ14/RJ14)
- ▶ The **STUSB** Installation CD-rom.

Damaged or missing items

In the event of damaged or missing items, contact your local product dealer for further instructions.

Other materials

Your **STUSB** shipping carton may also include release notes, safety and conformity declarations and other materials.

Your STUSB

Unlike most traditional modems, the electronic circuitry of the **STUSB** has been shaped into a stylish body. The input/output wiring is moulded in an ergonomically designed pigtail.

On the rear end of the pigtail you find the USB connector. That's the interface which connects the **STUSB** to your *Personal Computer* (PC). The ADSL Line port is situated in the inline receptacle. This port connects the **STUSB** to the ADSL highway.

Note: As you notice, there is no separate mains plug, cord, or power adapter. This is because the **STUSB** is powered via the USB connection.

1.2 What You Need

ADSL and telephone service

ADSL service must be enabled on your telephone line.

As both telephone and ADSL service are simultaneously available from the same copper pair, you need a central splitter or distributed filters for decoupling ADSL and telephone signals.

Contact your Service Provider for more information.



In all cases contact your ADSL Service Provider about splitter/filter installation !

Public telephone lines carry voltages that **can cause electric shock**.

Only install splitter/filters yourself if these are qualified for that purpose.

Other splitter/filters may only be installed by qualified service personnel.

Service Provider

You must have a user account at an *Internet Service Provider* (ISP) for Internet access:

For this user account, it will provide you:

- ▶ A user name (logon ID)
- ▶ A password.

Note: The **STUSB** supports two connection services: PPPoA and PPPoE. Depending on the preferences of your Service Provider, the connection service suitable for your connectivity to the Service Provider, hence the Internet will be installed by the Installation CD-Rom delivered with your **STUSB**.

PC or computer

Your PC or computer must be equipped with an USB port capable of powering attached USB devices. You may also use an USB hub to connect the **STUSB**.

Note: Make sure you are not using low-powered USB ports to connect the **STUSB**. In case you are not sure of the type of USB port, see the User's Guide of your PC or USB port hub.

1.3 Speed Touch USB Support

Supported Operating Systems

This User's Guide describes the installation and use of the **STUSB** under following Operating Systems (OSs):

- ▶ Microsoft OSs (See chapter 2)
 - Microsoft Windows 98, 98SE and higher
 - Microsoft Windows Millennium
 - Microsoft Windows 2000/XP
- ▶ Mac OSs (See chapter 3)
 - Mac OS8.6
 - Mac OS9.x
 - Mac OS X (Mac OS10.1)

Note: Mac OS10.0 user are strongly recommended to download the free upgrade to Mac OS10.1.

Note: The **STUSB** also supports Linux platforms. Refer to the Alcatel support web pages for more information.

STUSB driver software on the Internet

The Alcatel support web pages on the Internet provide **STUSB** software upgrades for download.

These upgrades are regularly updated and can be found at:

<http://www.alcatel.com>

<http://www.alcateldsl.com>

Procedure

1. Download the newest web upgrade from the Internet to a location on your local PC or computer.
2. Browse to the location where the web upgrade resides.
3. Double-click it.
4. Follow all instructions.

Installation procedure

When performing a web upgrade of the **STUSB** software, the installation process could slightly differ with the initial installation procedure.

2 Speed Touch USB for Microsoft Windows

Introduction This chapter describes how to install and use the **STUSB** for Microsoft Windows OSs.

In this chapter

Topic	See
Installing the STUSB	2.1
Using the STUSB	2.2

2.1 Installing the Speed Touch USB

Introduction

This section will assist you in installing the **STUSB** and preparing your PC for your Internet connectivity.

Microsoft Windows

- ▶ One of the following OSs must be readily installed on your PC:
 - Microsoft Windows 98/98SE or Microsoft Windows ME
 - Microsoft Windows 2000 or Microsoft Windows XPYou may need the Windows installation CD-rom during installation.
- ▶ For Windows98/98SE/ME:
 - Pentium processor 166 MHz, or higher (or compatible)
 - 32 Mega Byte (MB) of memory, or more.
- ▶ For Window2000/XP :
 - Pentium II processor, or higher (or compatible)
 - 64 MB of memory, or more.
- ▶ 30 MB of free disk space
- ▶ Microsoft Dial-Up Networking (default installed with the OS)
- ▶ A Web browser, e.g. Netscape Navigator, Internet Explorer, ... for surfing the Internet.

Two installation methods

As your **STUSB** is a true Plug-and-Play device you can use two different installation procedures:

- ▶ **The Alcatel Wizard Installation**
By inserting the **STUSB** Installation CD-rom, a wizard automatically guides you through all needed installation steps.
- ▶ **The Plug-and-Play Compliant Installation**
The installation procedure is initiated by connecting the **STUSB** to your PC's USB port.

It does not matter which method you use, both are equally valid.

In this section, the Alcatel wizard installation is fully described. In case you experience problems with this installation, you can try the Plug-and-Play compliant installation, shortly described at the end of this section.

Windows OS differences

The installation procedures might be slightly different depending on the Microsoft Windows OS you are using:

- ▶ Some windows will look differently
- ▶ On Windows 98/98SE no 'Digital Signature' window will pop up
- ▶ For Windows 98/98SE, at the end of the installation procedure, you may be asked to enter an area code for Dial-up connections.

Previous STUSB installations

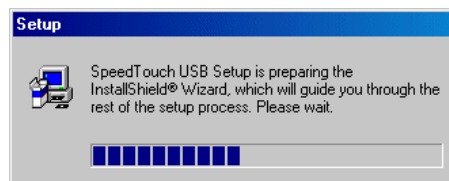
In case the **STUSB** was already installed on your system, the Alcatel wizard allows also an upgrade, removal or repair of the existing **STUSB** installation.

The Alcatel wizard installation

1. Insert the **STUSB** Installation CD-rom in your PC's CD-rom drive. The Alcatel wizard will start automatically.

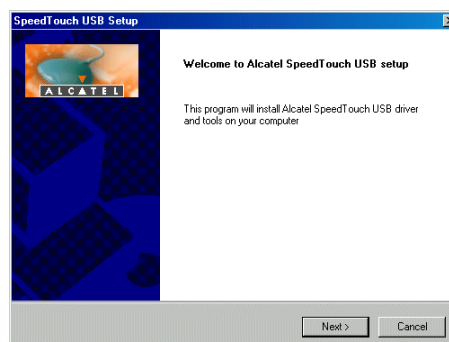
Note: In case the Alcatel wizard does not start automatically, open a 'Run' window via *Start* → *Run* from the Start menu and enter following path: *D:\Setup.exe*, where *D* stands for the drive letter of your CD-rom drive.

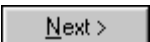
2. The **STUSB** Setup program prepares the Alcatel wizard:



As soon as the preparation is finished, the Alcatel wizard will start automatically.

3. The 'Welcome to Alcatel Speed Touch USB setup' window pops up:



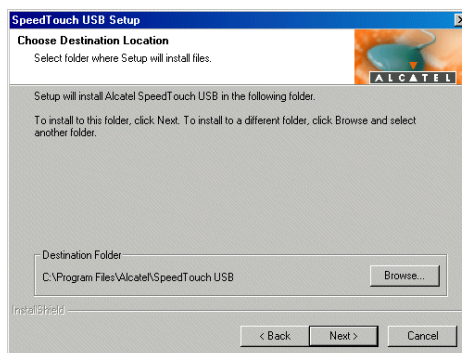
Click  to proceed.

4. The 'Software License Agreement for Alcatel Speed Touch USB' window pops up:



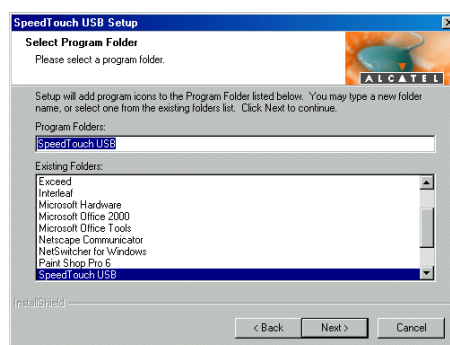
Click **Yes** to accept the terms of the agreement and to continue the installation.

5. The following window allows you to choose a destination folder for the **STUSB** driver software:



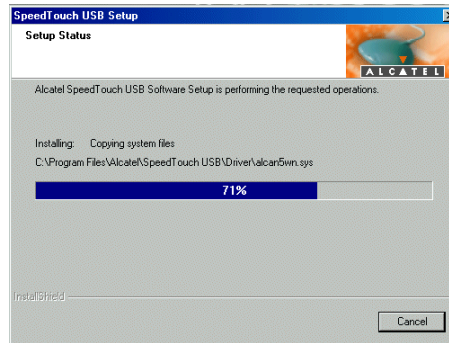
In most cases the proposed destination is best suited for the **STUSB** driver software. Click **Next >** to proceed.

6. The 'Select Program Folder' window pops up:



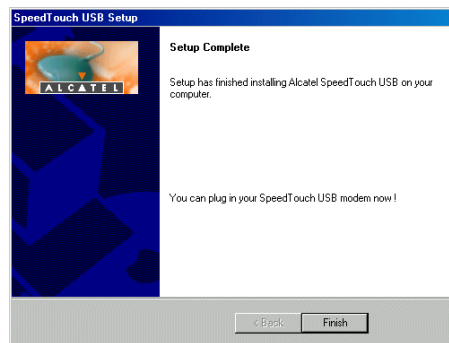
Click **Next >** to proceed.

7. The wizard copies **STUSB** driver software to your local disk:



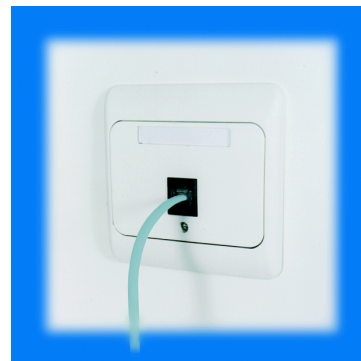
Note for Windows ME/2000/XP user only: If a 'Digital Signature' window pops up, click **Yes** to continue.

8. The 'Setup Complete' window pops up to announce that installation is finished:



Click **Finish** to close the wizard.

9. Plug the ADSL cable, provided in your package, into the inline receptacle of the **STUSB**. Plug the other end of the ADSL cable into the wall socket terminating ADSL service.

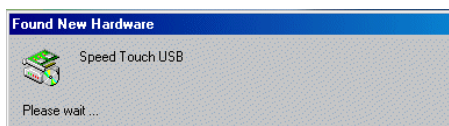


Note: Depending onto which pins of the wall socket the ADSL signals are assigned, it might be necessary to plug in an RJ11 interchanger into the wall socket prior to connect the ADSL cable.

10. Plug the **STUSB**'s USB connector into the PC's USB port.
An USB port can be easily located, it is marked with the typical USB symbol:



11. The 'Windows found New Hardware' wizard will automatically continue with the installation of the **STUSB** ADSL modem device:



12. The installation continues with the creation of the appropriate PPP Dial-Up Networking connections.
13. At the end of the procedure the 'Speed Touch Dial-Up' window pops up, allowing you to immediately connect to the Internet (See section 2.2).

The installation of the **STUSB** is now finished. The **STUSB** is now prepared for connecting you to the Internet.

The Plug-and-Play compliant installation

As an alternative to the Alcatel wizard installation you can also install the **STUSB** using the Plug-and-Play compliant installation.

1. Connect the **STUSB** to the ADSL wall socket and the PC.

Note: ADSL must be available, as well as the appropriate central splitter or distributed filters.

2. Windows will automatically recognize the **STUSB**.

The Windows 'Found new Hardware' wizard pops up. This wizard will guide you through the installation procedure.

Follow all the instructions. In most cases you only have to click



to proceed with the installation procedure.

3. At some point the **STUSB** Installation CD-Rom will be requested. At this point the Alcatel wizard will continue with the installation of the **STUSB** software and applications.
4. The installation continues with the creation of the appropriate PPP Dial-Up Networking connections.
5. At the end of the procedure the 'Speed Touch Dial-Up' window pops up, allowing you to immediately connect to the Internet (See section 2.2).

The installation of the **STUSB** is now finished. The **STUSB** is now prepared for connecting you to the Internet.

Installation results

After you have correctly followed the installation procedures, regardless whether the Alcatel wizard installation or the Plug-and-Play compliant installation procedures was used, the following folders and icons are added to your system:

- ▶ **SpeedTouch USB program folder:**

The *SpeedTouch USB* folder is added containing two **STUSB** applications:

- *SpeedTouch USB Dial-Up*
- *SpeedTouch USB Diagnostics.*

- ▶ **Desktop SpeedTouch Dial-up icon:**

A *SpeedTouch Dial-up* icon is added to your desktop.

- ▶ **System tray SpeedTouch status icon:**

An **STUSB** status icon is added to the system tray, allowing instant status information of the **STUSB**.

- ▶ **Microsoft Dial-Up Networking folder:**




A Dial-Up Networking icon is added for **STUSB** connectivity.

2.2 Using the Speed Touch USB

STUSB status icon As soon your **STUSB** is installed, a **STUSB** status icon is shown at your desktop's system tray:



STUSB status icon colors The **STUSB** status icon is colored, depending on the state of the **STUSB** device. If you position your mouse pointer over the **STUSB** status icon, a message pops up:

System tray icon	Message	Description
	Alcatel ADSL Modem Modem not plugged in	The STUSB is not plugged into the PC's USB port. An ADSL connection can not be established.
	Alcatel ADSL Modem Initializing ADSL line	The STUSB is plugged in, but has not (yet) accomplished synchronization over the ADSL line.
	Alcatel ADSL Modem. Sent : X bytes Received : Y bytes	The STUSB is connected, and synchronized, and has, up to this moment, sent X bytes, and received Y bytes over the ADSL line.

STUSB Diagnostics The **STUSB** status icon is also a short-cut to the **STUSB** Diagnostics application. This application allows you to overview some detailed parameters and settings of your **STUSB** and the current connection. Refer to the **STUSB** Diagnostics Guide for more information. The latest version of the Diagnostics Guide can always be downloaded from the Alcatel Support web pages.

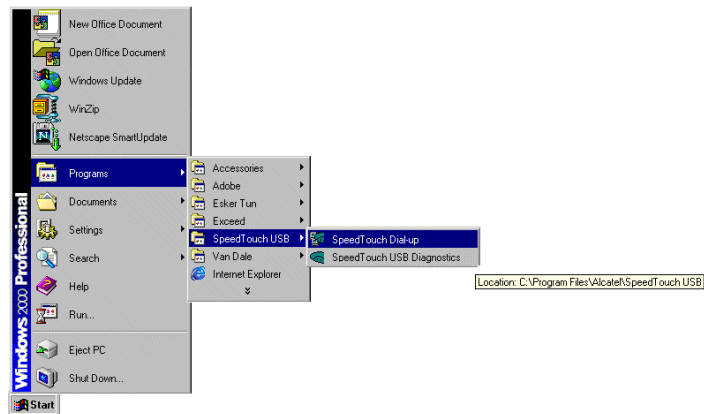
How to make a connection

Proceed as follows:

1. Double-click the 'SpeedTouch Dial-up' icon on your desktop:




Or open the **STUSB** Dial-up window via Start → Programs → SpeedTouch USB → SpeedTouch USB Dial-up:




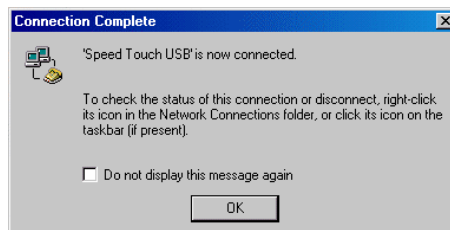
2. As a result the **STUSB** Dial-up window pops up:




Note: The example figure shows the Dial-up window in case of PPPoE connectivity. In case of PPPoA connectivity the 'Service Name' entry field is not available.

3. If needed, click  in the 'Connection' field and select the appropriate entry, if more than one, to connect with.
4. Enter user name and password for your user account at the Service Provider.

5. In case of PPPoE connectivity, you may need to choose a Service Name, which is provided by your Service Provider.
6. Click .
7. As soon the connection is made, the following message pops up:



8. Click . The message box and dial-up window are minimized into a DUN icon in the system tray:



On the Internet

As soon as you are connected, your web browser will open and browse to Alcatel's consumer web page. In case your web browser does not open automatically, you must open it manually.

DUN icon in the system tray

While you are connected, you can find the DUN icon showing two PCs connected to each other in the system tray:



The DUN icon itself symbolizes activity on the connection:

- ▶ A flashing "Front" PC symbolizes upstream (Tx) link activity (from your local PC towards the remote device).
- ▶ A flashing "Behind" PC symbolizes downstream (Rx) link activity (from the remote device towards your PC).

In case you position your mouse pointer over the DUN icon, a dialog box pops up.

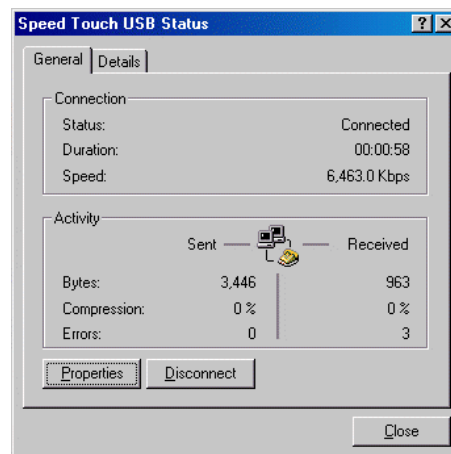
How to release a connection

Proceed as follows:

1. Double-click the MSDUN icon in the system tray:



2. As a result, the 'Speed Touch USB Status' window pops up (MS Windows 2000 example):



3. Click **Disconnect**. The connection is released. No Internet connectivity exists anymore.

Configuring multiple entries

In case you have more than one account, and/or multiple **STUSB** connected to your PC, you can create multiple DUN entries for the **STUSB**, with specific credentials, properties and home web page.

DUN entries are controlled via the **Connection** button in the **STUSB** Dial-up window.

3 Speed Touch USB for MAC OS

Introduction This chapter describes how to install and use the **STUSB** for Mac OSs.

In this chapter

Topic	See
Installing the STUSB	3.1
Using the STUSB	3.2

3.1 Installing the Speed Touch USB

Introduction This section will assist you in installing the **STUSB** and preparing your computer for your Internet connectivity.

Installation The installation depends on the Mac OS you are running:
In case of:

- ▶ **Mac OS 8.6** or **Mac OS9.x**
Proceed with subsection 3.1.1
 - ▶ **Mac OS X (Mac OS10.x)**
Proceed with subsection 3.1.2.
-

3.1.1 Installation for Mac OS8.6 and Mac OS9.x

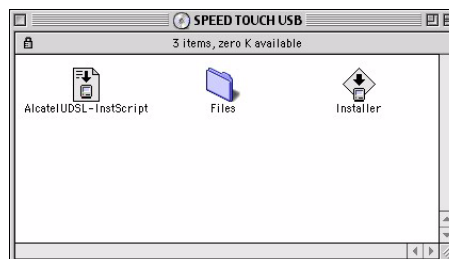
- Mac OS**
- ▶ One of the following OSs must be readily installed on your computer:
 - Mac OS8.6 or Mac OS9.x
 - ▶ 640 Kilo Byte (KB) of free disk space
 - ▶ A Web browser, e.g. Netscape Navigator, Internet Explorer, ... for surfing the Internet.

- STUSB installation**
1. Insert the **STUSB** Installation CD-rom in your computer's CD-rom drive.
 2. On your desktop the CD-rom icon will appear:



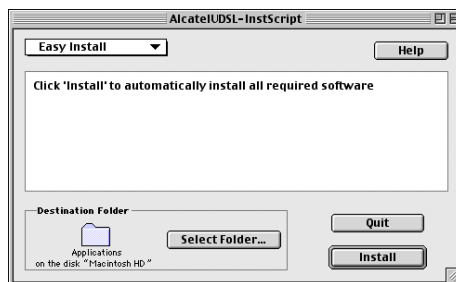
Double-click the CD-rom icon to proceed.

3. The CD-rom contents window pops up:



Select the Double-click  to start the **STUSB** installer.

4. A Welcome screen appears that describes the steps in the installation process:



Click  to proceed.

5. During installation a screen shows the installation progress. At the end of the installation procedure, the following screen appears:



Click  to proceed.

6. Plug the ADSL cable, provided in your package, into the inline receptacle of the **STUSB**. Plug the other end of the ADSL cable into the wall socket terminating ADSL service.

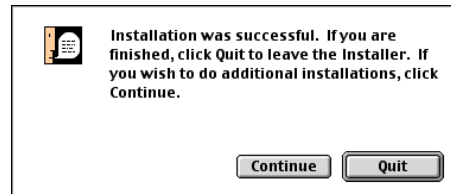


Note: Depending onto which pins of the wall socket the ADSL signals are assigned, it might be necessary to plug in an RJ11 interchanger into the wall socket prior to connect the ADSL cable.

7. Plug the **STUSB**'s USB connector into the computer's USB port. An USB port can be easily located, it is marked with the typical USB symbol:



8. A dialog box appears to announce that the installer has finished installation:



As no further installation is required for the **STUSB**, click



to leave the installer.

Installation results

After you have correctly followed the **STUSB** installation procedure, the following applications and icons are added to your system:

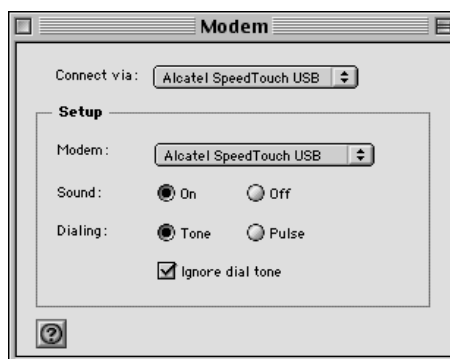
- ▶ **SpeedTouch USB added in modem list:**
In the list of available modems, the *Alcatel SpeedTouch USB* is added
 - ▶ **SpeedTouch USB status and Diagnostics icon:**
An **STUSB** status icon is added to the control strip, allowing instant status information of the **STUSB**.
-

Additional configuration

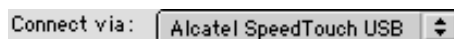
Next to the installation of the **STUSB** software, the **STUSB** must be configured as default modem for the remote access application.

Proceed as follows:

1. Open the *Modem* control panel:



2. Check for the following:
 - In the 'Connect via' field, **Alcatel SpeedTouch USB** must be selected:



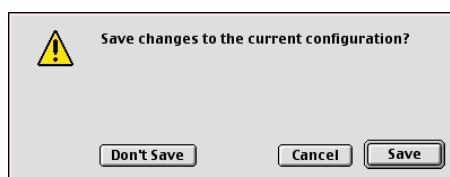
- In the 'Modem' field, **Alcatel SpeedTouch USB** must be selected:




In case other selections are made, make the appropriate adaptations:

3. Close the *Modem* control panel.

A dialog box appears asking whether you want to save the changes you made:



Click  to save your changes to the configuration.

3.1.2 Installation for Mac OS X (Mac OS10.1)

- Mac OS**
- ▶ The following OS must be readily installed on your computer:
 - Mac OS X (Mac OS10.1)

Note: Mac OS10.0 user are strongly recommended to download the free upgrade to Mac OS10.1.
 - ▶ 100 Mega Byte (MB) of free disk space
 - ▶ A Web browser, e.g. Netscape Navigator, Internet Explorer, ... for surfing the Internet.

STUSB software installation


1. Insert the **STUSB** Installation CD-rom in your computer's CD-rom drive.
2. On your desktop the CD-rom icon will appear:




Double-click the CD-rom icon to proceed.

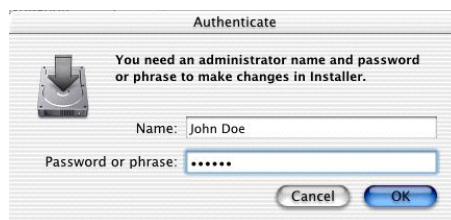
3. The CD-rom contents window pops up:

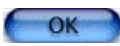


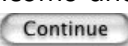
Double-click  to open the Mac OS10.x installation folder.

4. In the Mac OS10.x folder, double-click  to start the installation.



5. In case an Administrator password was set, you must provide it before the Installer is able to continue with the **STUSB** installation:



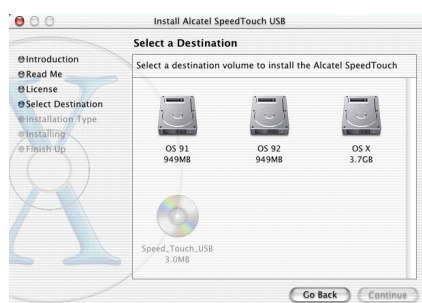
Provide Name and Password or Phrase and click  to proceed.



6. A Welcome and Readme screen subsequently pops up. Click each time  to proceed.
7. The Alcatel Software License Agreement screen pops up:




You must agree to it before you are able to continue. Click  and  to proceed.

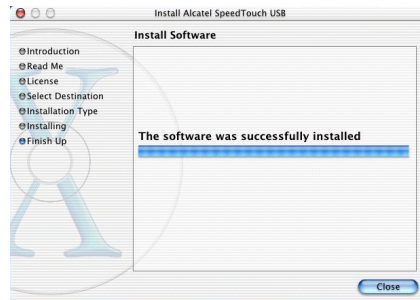
8. The following screen allows you to select a destination volume to install the **STUSB**:



Select a destination. Your selection will be highlighted by a green arrow: . Click  to proceed.

9. The Installer has now all information to continue with the installation. Click  to start the installation.

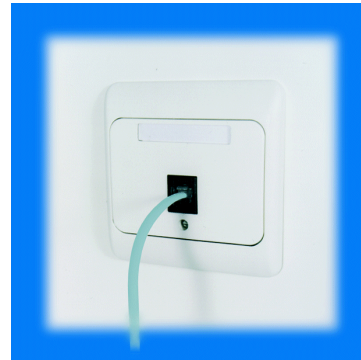
10. At the end of the installation procedure, the following screen appears:



Click  to finish the installer.

STUSB hardware installation

1. Plug the ADSL cable, provided in your package, into the inline receptacle of the **STUSB**. Plug the other end of the ADSL cable into the wall socket terminating ADSL service.



Note: Depending onto which pins of the wall socket the ADSL signals are assigned, it might be necessary to plug in an RJ11 interchanger into the wall socket prior to connect the ADSL cable.

2. Plug the **STUSB**'s USB connector into the computer's USB port. An USB port can be easily located, it is marked with the typical USB symbol:



Installation results


After you have correctly followed the **STUSB** installation procedure, the following applications and icons are added to your system:

- ▶ **SpeedTouch USB added in network list:**
In the Network panel, the *Alcatel SpeedTouch USB* is added in the list of available network devices.
- ▶ **Dock SpeedTouch USB status icon:**
An **STUSB** status icon is added to the Dock, allowing instant status information of the **STUSB**.
- ▶ **SpeedTouch USB Diagnostics application:**
A **STUSB** Diagnostics icon is added to the applications folder.

Additional configuration

Next to the installation of the **STUSB** software, you must configure it for Internet connectivity.

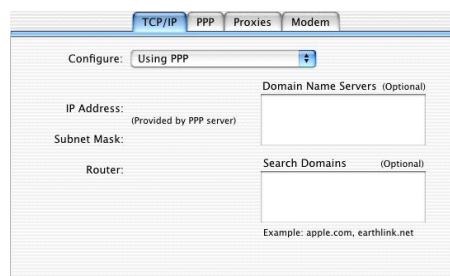
Proceed as follows:

1. Open your System Preferences and click  to open the network panel.

2. Select the **STUSB** from the list of available network devices:



3. The first tab 'TCP/IP' of the Network panel shows the TCP/IP settings for the **STUSB** network connection:



Check that the connection is configured for PPP connectivity:



4. Click the 'PPP' tab. This panel shows the PPP configuration:

Enter the following information:

- In the 'Account Name' field, your user name for your User Account at the Internet Service Provider, e.g.:

Account Name: john.doe@My_ISP

- In the 'Password' field the password for this user name.

Password:

Note: Tick 'Save password' (✓) in case you want the computer to remember your user name, and password:


Optionally you can enter a name for this connection in the 'Service Provider' field. All other fields may stay empty.

5. Click the 'Proxies' tab. This panel shows the proxy settings. By default all fields are empty, i.e. no proxies are used. As this suits the required **STUSB** configuration, no changes are needed in this panel.
6. Click the final tab 'Modem'. This panel shows the modem configuration:

From the list of modems select the 'Null Modem 115200':

Modem: Null Modem 115200

Leave the other modem settings unchanged.

7. Run through all panels again to check whether all configurations are correctly done as described above and click  to apply the settings.
 8. To prevent further changes you can click the lock to secure your settings. From then on changes are only possible after providing the Administrator password.
-

3.2 Using the Speed Touch USB

Introduction This section will show you how to use the **STUSB** to make a connection to the Internet and how you can check the **STUSB** status.

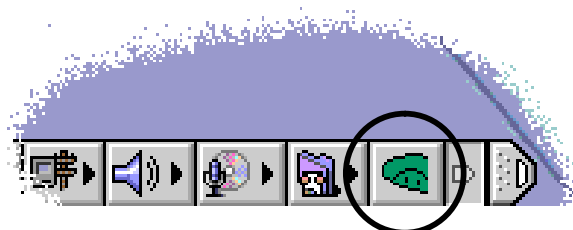
Installation The use of the **STUSB** depends on the Mac OS you are running:
In case of:

- ▶ **Mac OS 8.6** or **Mac OS9.x**
Proceed with subsection 3.2.1
 - ▶ **Mac OS X (Mac OS10.1)**
Proceed with subsection 3.2.2.
-

3.2.1 Using the STUSB in Mac OS8.6 and Mac OS9.x

STUSB status icon




As soon your **STUSB** is installed, an **STUSB** status icon is shown at your desktop's control strip:



Note: In case the control strip is not visible, you must activate it via the *Apple menu* → *Control Panels* → *Control Strip*. In case the **STUSB** status icon is not visible, you can drag the control strip to enlarge it.

STUSB status icon colors

The **STUSB** status icon is colored, depending the state of the **STUSB** device:

STUSB status icon color	Description
	The STUSB is not plugged into the computer's USB port. An ADSL connection can not be established.
	The STUSB is plugged in, but has not (yet) accomplished synchronization over the ADSL line.
	The STUSB is connected, and synchronized.

STUSB Diagnostics


The **STUSB** driver software features a Diagnostics application. This application allows you to overview some detailed parameters and settings of your **STUSB** and the current connection.

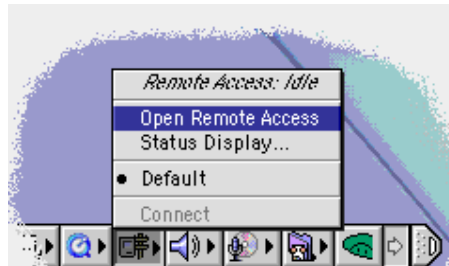
a shortcut to the application can be found in the 'Application' folder on your system startup disk.

Refer to the **STUSB** Diagnostics Guide for more information. The latest version of the Diagnostics Guide can always be downloaded from the Alcatel Support web pages.

How to make a connection


Proceed as follows:

1. In the control strip, click the *Remote Access* icon  and select 'Open Remote Access':

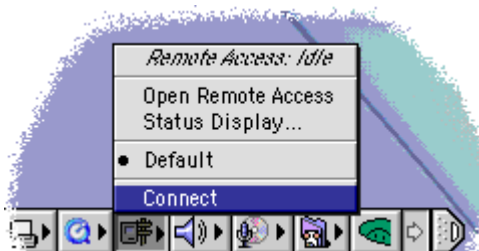


2. As a result the 'Remote Access' window appears:



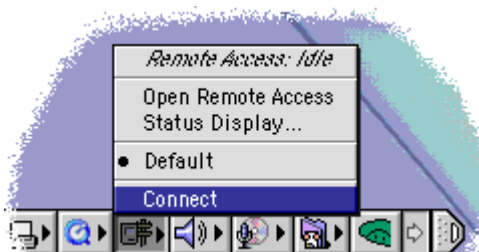
3. Enter user name and password for your user account at the Service Provider.
Note: Tick 'Save password' (✓) in case you want the application to remember your user name, and password.
4. In case of PPPoA connectivity you must enter a digit, e.g. 0, into the 'Number' field. In case of PPPoE connectivity you may need to enter a Service Name, which is provided by your Service Provider.
5. Click .
6. As soon the connection is made you can open your web browser and surf the Internet.

Note In case you ticked the 'Save password' box (✓), the next time, you can open a connection by simply clicking the *Remote Access* icon in the control strip, and selecting 'Connect':



How to release a connection

To release a remote access connection, click the *Remote Access* icon in the control strip, and select 'Disconnect':



As a result the connection is released. No Internet connectivity exists anymore.

3.2.2 Using the STUSB in Mac OS X (Mac OS10.x)




STUSB status icon

As soon your **STUSB** is installed, an **STUSB** status icon is shown in the Dock:



STUSB status icon colors

The **STUSB** status icon varies depending the state of the **STUSB** device:

STUSB status icon color	Description
	The STUSB is not plugged into the computer's USB port. An ADSL connection can not be established.
	The STUSB is plugged in, but has not (yet) accomplished synchronization over the ADSL line.
	The STUSB is connected, and synchronized.

STUSB Diagnostics

The **STUSB** driver software features a Diagnostics application. This application allows you to overview some detailed parameters and settings of your **STUSB** and the current connection.

You can open the Diagnostics by clicking the **STUSB** status icon and selecting '*Alcatel Speed Touch USB*'. Alternatively, a shortcut to the application can be found in the '*Application*' folder on your system startup disk.


Refer to the **STUSB** Diagnostics Guide for more information. The latest version of the Diagnostics Guide can always be downloaded from the Alcatel Support web pages.

How to make a connection

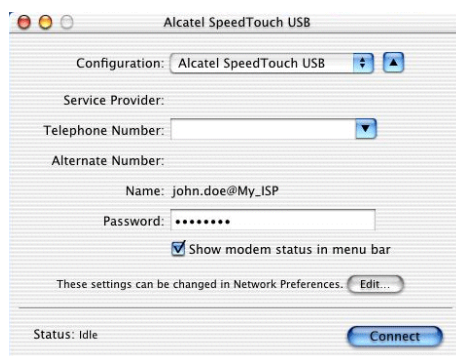
Proceed as follows:

1. Open the 'Applications' folder on your Mac OS10.x system startup disk:

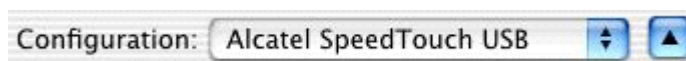


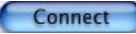
Double-click  to open the Internet connect application.

2. The following screen appears:



If needed select the **STUSB** from the list of available network devices in the 'Configuration' field:



3. Click .
4. As soon the connection is made you can open your web browser and surf the Internet.

How to release a connection

Proceed as follows:

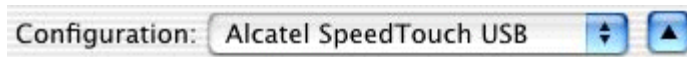
1. Double-click the Internet connect icon from the Dock:



2. The following screen appears:



If needed select the **STUSB** from the list of available network devices in the 'Configuration' field:



3. Click **Disconnect**.

As a result the connection is released. No Internet connectivity exists anymore.

AppendixA Troubleshooting

Solving problems

This appendix provides information on how to identify and correct some common problems you may encounter when using the **STUSB**.

In most cases the described solutions will solve the problem.

However, if the problem keeps persistent, reinstallation of your **STUSB** might solve the problem.

If reinstallation has not resolved the problem, contact the company from which you purchased the **STUSB** for assistance.

STUSB LEDs

Your **STUSB** is equipped with two Bi-colored LEDs . These indicators indicate the status of the **STUSB**. Checking the **STUSB** status may be a first step in isolating the problem.

Start-up phases

At startup, the **STUSB** passes three phases:

Phase	USB LED		ADSL LED		Description
	Color	Timing	Color	Timing	
<i>Attaching and Configuring</i>	Red	Flashing, very short time	Off	—	The STUSB is attached.
	Green	Solid, 2seconds	Green	Solid, 2seconds	Ready to continue.
<i>Downloading</i>	Green	Flashing, 1 to 10 seconds	Off	—	Downloading driver software from computer.
	Green	Solid	Amber	Solid	Download successful.
<i>Connecting to ADSL</i>	Green	Solid	Green	Flashing	Pending ADSL line synchronization
	Green	Solid	Green	Solid	Ready for connectivity

Failed POST

When a *Power on Self Test* (POST) failed, both LEDs are solid amber.

Normal operation during a session

In this state the *USB LED* is assigned to the downstream (R_x) data channel (towards the USB connection).

The *ADSL LED* is assigned to the upstream (T_x) data channel (towards the ADSL channel).

Both LEDs stay green. When an ATM cell is processed in a channel, the associated LED will go off for a short time.

USB bus congestion

The *USB LED* flashes red during a session in case of USB bus congestion.

Solution table

Indication & Problem	Solution
Speed Touch™USB <i>does not work:</i> <i>No LEDs light up.</i> <i>There is no power supplying connection.</i>	Verify the STUSB connections. Check if the STUSB 's cord is damaged in any way. When using a portable computer in battery mode, it is possible that its USB port is not powered. Refer to the portable's User's Guide for more information. Check if the STUSB is not connected to a low-powered USB hub port. Refer to the USB hub's User' Guide for more information.
Speed Touch™USB <i>installation failed.</i>	Verify your computer is running one of the supported OSs and that it meets the according minimum requirements. Check whether the STUSB is not connected to a low-powered USB hub port. Refer to the USB hub User's Guide for more information.
<i>USB LED flashes red, or stays solid red.</i>	Your USB port congests, meaning that too much traffic is passing through the port. Avoid using multiple high speed USB devices, e.g. scanners, speaker, etc. during heavy duty, e.g. a data download.
<i>Both USB LED and ADSL LED are solid amber.</i>	Power On Self Test (POST) failed. Check whether the connections are correctly made.

AppendixB

Safety and Agency Regulatory Notices

Aim of this appendix

This appendix provides basic Safety Information on your **Speed Touch™** product.

Prior to using the **Speed Touch™**, read this appendix carefully.

Reading all instructions

Follow all warnings and instructions marked on the product.

Directive

Unless expressly and unambiguously approved by Alcatel, you may not:

- ▶ disassemble, de-compile, reverse engineer, trace or otherwise analyse the equipment, its content, operation, or functionality, or otherwise attempt to derive source code (or the underlying ideas, algorithms, structure or organization) from the equipment or from any other information provided by Alcatel, except to the extent that this restriction is expressly prohibited by local law;
- ▶ copy, rent, loan, re-sell, sublicense, or otherwise transfer or distribute the equipment to others;
- ▶ modify, adapt or create a derivative work of the equipment;
- ▶ remove from any copies of the equipment any product identification, copyright or other notices;
- ▶ disseminate performance information or analysis (including, without limitation, benchmarks) from any source relating to the equipment.

Such acts not expressly approved by Alcatel will result in the loss of product warranty and will invalidate the user's authority to operate this equipment.



STORE THESE INSTRUCTIONS CAREFULLY



B.1 Safety Instructions

Climatic conditions The **Speed Touch™** equipment is intended for:

- ▶ In-house stationary desktop use; the maximum ambient temperature may not exceed 40°C (104°F).
- ▶ It must not be mounted in a location exposed to direct or excessive solar and/or heat radiation.
- ▶ It must not be exposed to heat trap conditions and must not be subjected to water or condensation.
- ▶ It must be installed in a Pollution Degree 2 environment.

Cleaning Unplug this product from the wall socket and PC before cleaning. Do not use liquid cleaners or aerosol cleaners. Use a damp cloth for cleaning.

Water and moisture Do not use this product near water, for example, near a bathtub, wash bowl, kitchen sink, laundry tub, in a wet basement or near a swimming pool.

Power sources The **Speed Touch™** is powered via the USB connector on your computer, or an USB hub port.

The powering of this product must adhere to the power specifications indicated on the marking labels.

Do not allow anything to rest on the USB cord. Do not locate this product where the cord will be subject to persons walking on it.

Pay particular attention to the cord's plug, receptacle and cable-to-body entry point; do not use the product when these points of the cord are damaged.

Overloading Do not overload wall (mains) outlets and extension cords as this increases the risk of fire or electric shock.

Servicing To reduce the risk of electric shock, do not disassemble this product. None of its internal parts are user-replaceable; therefore, there is no reason to access the interior. Opening or removing covers may expose you to dangerous voltages. Incorrect reassembly could cause electric shock if the appliance is subsequently used.

If service or repair work is required, take it to a qualified service dealer.

Damage requiring service

Unplug this product from the wall outlet and refer servicing to qualified service personnel under the following conditions:

- ▶ When the power supply cord or plug is damaged or frayed.
 - ▶ If liquid has been spilled into the product.
 - ▶ If the product has been exposed to rain or water.
 - ▶ If the product does not operate normally.
 - ▶ If the product has been dropped or damaged in any way.
 - ▶ If the product exhibits a distinct change in performance.
-

Modem/Telephone use

Avoid using a modem/telephone (other than a cordless type) during an electric storm. There is a slight risk of electric shock caused by lightning. Do not use the telephone to report a gas leak in the vicinity of the leak. If telephone service is required on the same line, a central splitter or distributed filter(s) must be installed for optimal ADSL performance. Depending on your ADSL configuration and type of splitter/filters, installation must be carried out by qualified service personnel. Consult your telephone service company or ADSL service provider for instructions.

Modifications

Changes or modifications not expressly approved by Alcatel could invalidate the users authority to operate this equipment.



Products with the **CE** marking comply with both EMC and Low Voltage Directives issued by the Commission of the European Community.

EC Declaration of Conformity

Hereby, Alcatel, declares that this **Alcatel Speed Touch™** product is in compliance with the essential requirements and other relevant provisions of Directive 1999/5/EC.

B.2 Safety and Compliancy Statements

Radio Frequency Interference Statement

This device has been tested and found to comply with the limits for a Class B digital device, pursuant to Part 15 of the FCC Rules. These limits are designed to provide reasonable protection against such interference in a residential installation. This equipment generates, uses and can radiate radio frequency energy. If not installed and used in accordance with the instructions, it may cause harmful interference to radio communications. However, there is no guarantee that interference will not occur in a particular installation. If this equipment does cause harmful interference to radio or television reception, which can be determined by turning the equipment ON and OFF, the user is encouraged to try correct the interference by one or more of the following measures:

- ▶ Reorient or relocate the receiving antenna
- ▶ Increase the separation between the equipment and receiver
- ▶ Connect the equipment into an outlet on a circuit different from that to which the receiver is connected
- ▶ Consult the dealer or an experienced radio/television technician for help.

This equipment complies with Part 68 of the FCC Rules. On the back of this equipment is a label that contains, among other information, the FCC certification number (FCC ID) and Ringer Equivalence number (REN) for this equipment. If requested, this information must be provided to the telephone company.

An FCC compliant telephone cord and modular plug is provided with this equipment. This equipment is designed to be connected to the telephone network or premises wiring using a compatible modular jack that is Part 68 compliant.

The Ringer Equivalence Number (REN) is used to determine the quantity of devices that may be connected to the telephone line. Excessive RENs on the telephone line may result in the devices not ringing in response to an incoming call. Typically, the sum of RENs should not exceed five (5.0). To be certain of the number of devices that may be connected to a line (as determined by the total RENs) contact the local telephone company.

If this equipment causes harm to the telephone network, the telephone company will notify you in advance that temporary discontinuance of service may be required. But if advance notice is not practical, the telephone company will notify the customer as soon as possible. Also you will be advised of your right to file a complaint with the FCC if you believe it is necessary.

The telephone company may make changes to its facilities, equipment, operations or procedures that could affect the operation of the equipment. If this happens the telephone company will provide advance notice so you can make the necessary modifications to maintain uninterrupted service.

If the equipment is causing harm to the telephone network, the telephone company may request that you disconnect the equipment until the problem is resolved. Connection to party lines is subject to state tariffs (contact the state public utility commission, public service commission or corporation commission for information).

No repairs can be performed by the customer, if you experience trouble with this equipment for repair or warranty information, please contact: (919) 850-1231 for locations in North America.

Notification of Canadian RF Interference Statements

This digital apparatus does not exceed the Class B limits for radio noise emissions from digital apparatus as set out in the radio interference regulations of the Canadian Department of Communication.

Le présent appareil numérique n'émet pas de bruits radioélectriques dépassant les limites applicable aux appareils numérique de classe B prescrites dans le règlement sur le brouillage radioélectrique édicté par le Ministère des Communications du Canada.
