

Diva ADSL USB

Quickstart Guide



ENGLISH

FRANÇAIS

DEUTSCH

ITALIANO

ESPAÑOL

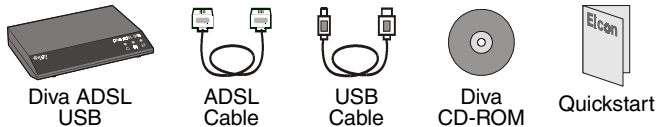
Introduction

Thank you for choosing the Eicon Networks Diva ADSL USB.

The Diva ADSL USB is plug-and-play, and installation is a simple procedure. However, please read through this guide carefully to ensure a smooth installation process.

Package Contents

Your package should include the following:



- The Diva ADSL USB is compatible with USB-equipped computers running Windows 98, Windows Millennium Edition, Windows 2000, and Windows XP. It cannot be used with Windows 95, Windows NT, or Macintosh.
- The Diva ADSL USB draws power through the USB cable and does not require a separate power adapter.
- Depending on your region, the ADSL cable included in your package may differ from the illustration above. Or, your package may include an RJ11-type phone cable and an adapter to use when connecting to your wall outlet. You may also need to acquire an adapter separately. Contact your provider for more details.

Dial-Up Networking Required

► The following applies to Windows 98/Me only.

If your Internet provider requires that you use a Dial-Up Network connection in order to connect to the Internet, Microsoft Dial-Up Networking software must already be present for the installation to work.

To verify if Dial-Up Networking is installed:

- Windows 98: Double-click 'My Computer' from the Windows desktop. You should see a folder named 'Dial-Up Networking'.
- Windows Me: Click 'Start' then 'Settings'. You should see a menu item named 'Dial-Up Networking'.

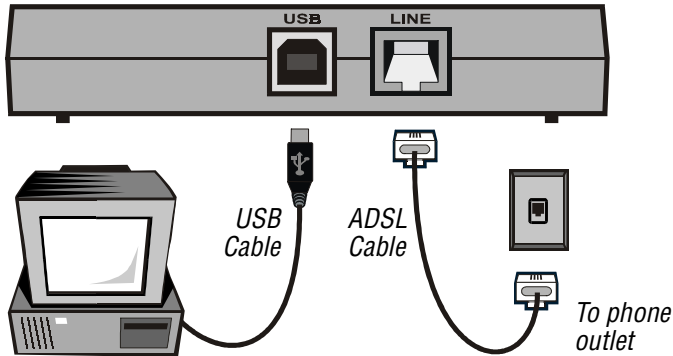
If Dial-Up Networking is not present, follow the instructions below to install the software, or consult the online help for your operating system.

► You may be asked to insert your Windows installation CD-ROM during this process.

1. Click 'Start' then 'Settings', then select 'Control Panel'.
2. Double-click 'Add/Remove Programs'.
3. Click the 'Windows Setup' tab.
4. Select 'Communications' from the list, then click 'Details'.
5. Select the 'Dial-Up Networking' check box, then click 'OK'.
6. Click 'OK' again to close the 'Add/Remove Software' dialog box, then follow the onscreen instructions. If you are asked to restart your computer, do so.

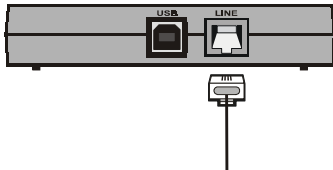
Step 1: Connecting the Cables

For a trouble-free installation, please follow the steps exactly as they are described.



IMPORTANT: Leave your computer on during installation. If your computer is off, turn it on and wait until Windows has booted and the desktop is visible.

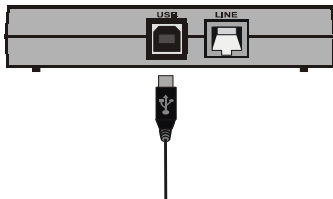
1. Verify that Dial-Up Networking is installed, as described in **Dial-Up Networking Required** on page 1.
2. Connect the included ADSL phone cable to the port marked 'LINE' on the back of the Diva ADSL USB.



Connect the other end of the cable to a telephone outlet.

- You may need to connect an adapter to the RJ11 cable before connecting it to the telephone outlet.

3. Connect the **square** end of the included USB cable to the port marked 'USB' on the back of the Diva ADSL USB.



Connect the other end to an available USB port on your computer.

4. Once the USB cable is connected, Windows will display the 'Hardware Wizard' window.
5. See **Step 2: Hardware Wizard** on page 2 to continue.

Step 2: Hardware Wizard

The Hardware Wizard appears automatically once the USB cable is connected. The steps for the Hardware Wizard are slightly different depending on the version of Windows you are using, as described below. You may be asked to insert your Windows CD-ROM during this process.

- If Windows does not automatically detect the Diva ADSL USB, disconnect the USB cable and restart Windows. When the boot-up sequence is complete and the Windows desktop is shown, re-connect the USB cable.

- Windows Me Hardware Wizard 2
- Windows 2000 Hardware Wizard 3
- Windows 98 Hardware Wizard 3
- Windows XP Hardware Wizard 5

Windows Me Hardware Wizard

1. Insert the Diva CD-ROM into your CD-ROM drive.

2. Select 'Automatic search for a better driver', then click 'Next'.



3. When installation is complete, click 'Finish'.

- If Windows reports that it has found more than one driver and gives you a choice of drivers to use, select the file named 'GROOTUSB.INF'.



4. See **Completing the Software Installation (Windows 98/Me/2000)** on page 4 to continue.

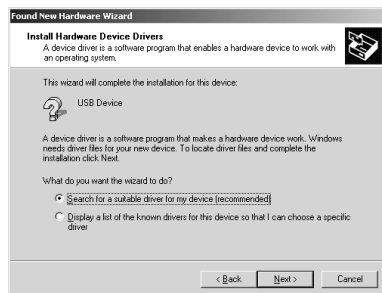
Step 2: Hardware Wizard (continued)

Windows 2000 Hardware Wizard

1. Insert the Diva CD-ROM into your CD-ROM drive.
2. Click 'Next'.



3. Select 'Search for a suitable driver', then click 'Next'.

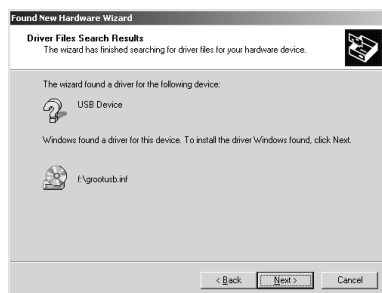


4. When asked for the location of the driver files, select 'CD-ROM drives', clear all other options, then click 'Next'.



5. Once the driver is located, click 'Next' to begin installation.

- If Windows reports that it has found more than one driver and gives you a choice of drivers to use, select the file named 'GROOTUSB.INF'.



6. When installation is complete, click 'Finish'.



7. See **Completing the Software Installation (Windows 98/Me/2000)** on page 4 to continue.

Windows 98 Hardware Wizard

1. Insert the Diva CD-ROM into your CD-ROM drive.
2. From the 'Hardware Wizard' window, click 'Next'.



3. Select the option 'Search for the best driver', then click 'Next'.



4. When asked for the location of the driver files, select 'CD-ROM drive', clear all other options, then click 'Next'.



5. Once the driver is located, click 'Next' to begin installation.

- If Windows reports that it has found more than one driver and gives you a choice of drivers to use, select the file named 'GROOTUSB.INF'.



6. When installation is complete, click 'Finish'.

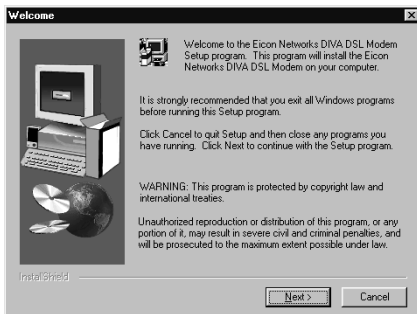


7. See **Completing the Software Installation (Windows 98/Me/2000)** on page 4 to continue.

Step 2: Hardware Wizard (continued)

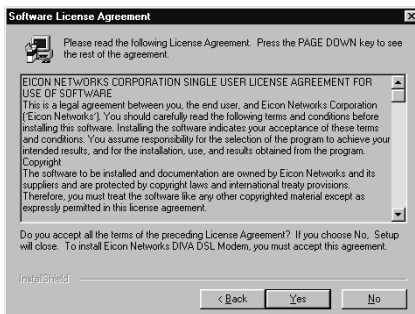
Completing the Software Installation (Windows 98/Me/2000)

Once the initial driver setup is complete, the software installation program should automatically start, as shown below.

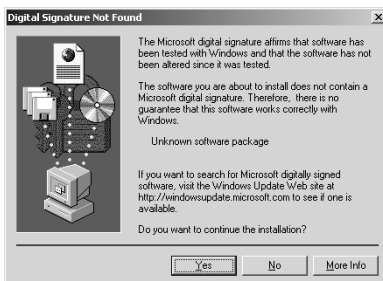


► If the 'Welcome' screen is not visible, click 'Start', 'Run', and type in 'd:\setup.exe', with 'd' being the letter of your CD-ROM drive.

1. From the welcome page, click 'Next' to begin the installation.
2. From the license agreement page, click 'Yes' to continue.



3. When requested, select the ISP or protocol and click 'Next'. This information is specified by your provider.
 - If your ISP or protocol is not listed, select 'Other Service Provider', click 'Next' and follow the onscreen instructions.
4. When the setup program reports that it is ready to install the software, click the 'Next' button.
5. If you are using Windows 2000, a 'Digital Signature Not Found' window may appear, stating that the software does not have a digital signature. Click 'Yes' to continue the installation.



6. Once setup is complete, click 'Finish'.



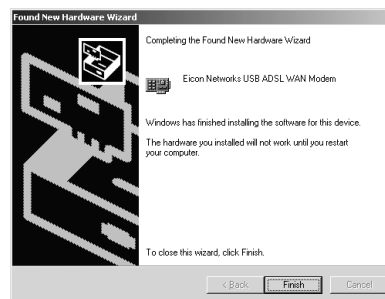
7. The software setup program will exit, and Windows will once again detect new hardware.



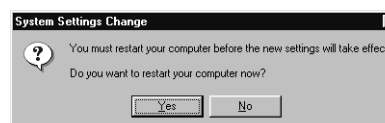
The new driver files will be automatically installed. Windows may pause for 5-10 seconds while it contacts and configures the Diva ADSL USB.

Please note:

- If you are using Windows 2000, a 'Digital Signature Not Found' window may appear, stating that the software does not have a digital signature. Click 'Yes' to continue the installation.
 - If a 'Version Conflict' window appears, click 'Yes' to keep the existing, newer file.
8. If you are using Windows 2000, you will see a message stating the installation is complete. Click 'Finish'.



9. For all operating systems, when the installation is finished, you will see a message requesting that you restart windows. Click 'Yes'.



10. See **Step 3: Dial-Up Networking Connection (If Required)** on page 6 to continue.

Step 2: Hardware Wizard (continued)

Windows XP Hardware Wizard

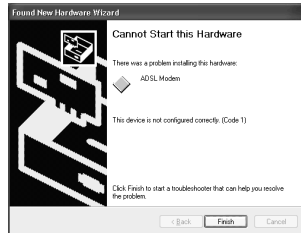
1. Insert the Diva CD-ROM into your CD-ROM drive.

2. Select 'Install the software automatically' and click 'Next'.

- If auto-insert notification of the CD-ROM is enabled, Windows XP will proceed on its own once the CD spins up.



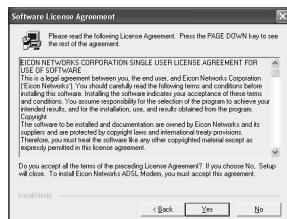
3. After a few moments, Windows XP will report that the hardware cannot be started. This is normal. Click 'Finish'.



4. The modem setup program will then start automatically. From the welcome page, click 'Next'.



5. From the license agreement page, click 'Yes'.

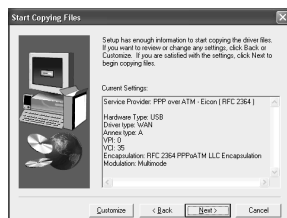


6. When requested, select the ISP or protocol and click 'Next'. This information is specified by your provider.

- If your ISP or protocol is not listed, select 'Other Service Provider', click 'Next' and follow the onscreen instructions.



7. At the 'Start Copying Files' screen, click 'Next'.



8. During installation, Windows will display a message about Windows logo testing. Click 'Continue Anyway'.



9. When the 'Setup Complete' window is displayed, click 'Finish'.

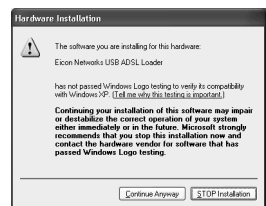


10. The 'Found New Hardware Wizard' will appear a second time.

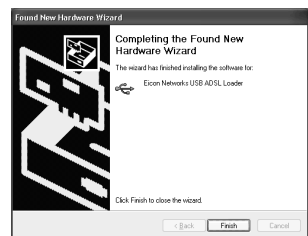
Select 'Install the software automatically' and click 'Next'.



11. During installation, Windows will display a message about Windows logo testing. Click 'Continue Anyway'.



12. When the wizard finishes copying files, click 'Finish'.



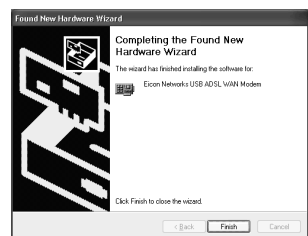
13. The 'Found New Hardware Wizard' will appear for a third time.

Select 'Install the software automatically' and click 'Next'.



14. During installation, Windows will display a message about Windows logo testing. Click 'Continue Anyway'.

15. When the wizard finishes copying files, click 'Finish'.



Installation is complete.

A note in the system tray confirms that the Diva ADSL modem is ready to be used.



16. See Step 3: Dial-Up Networking Connection (If Required) on page 6 to continue.

Step 3: Dial-Up Networking Connection (If Required)

If your Internet provider requires that you use a Dial-Up Network connection in order to connect to the Internet, a dial-up networking connection was created automatically and a shortcut to this connection was copied to your desktop.



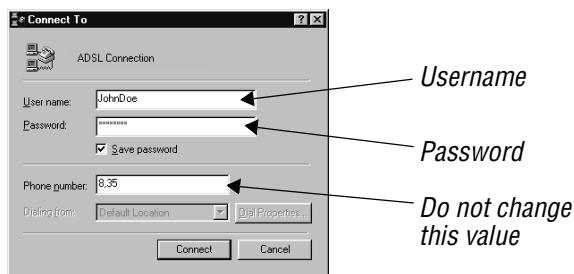
ADSL Connection

To access the Internet, you must first dial this connection. You will be required to enter your username and password.

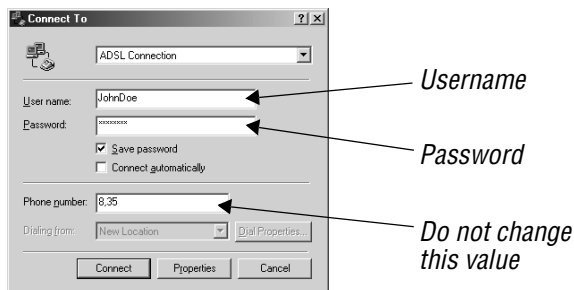
Dialing the Dial-Up Connection

1. Double-click the Dial-Up Connection shortcut.
2. The 'Connect' window will appear. This window is different depending on the operating system.

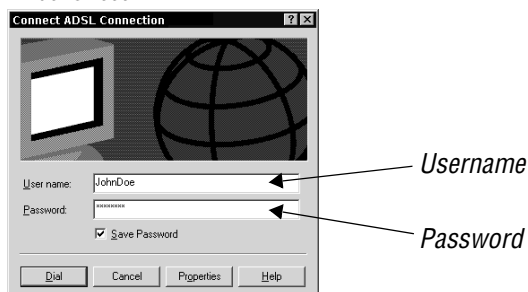
Windows 98



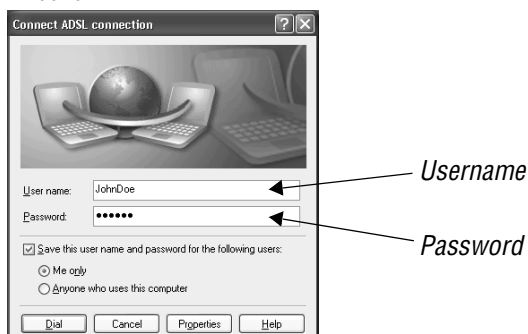
Windows Me



Windows 2000



Windows XP



3. Enter your username and password into the appropriate fields. Please note:

- Passwords are case-sensitive (pass and PASS are not the same, for example).
- To avoid having to enter your username and password each time you wish to access the Internet, select the 'Save password' option.

4. To dial the connection:

- Windows 98/Me: Click 'Connect'.
- Windows 2000/XP: Click 'Dial'.

Once successfully connected to the Internet, the Dial-Up Networking connection will minimize to the System Tray. To terminate this connection, right-click on this icon and select 'Disconnect'.

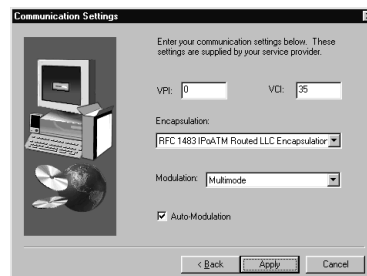
Location of Original Dial-Up Connection Files

- Windows 98: Double-click 'My Computer' from the Windows desktop, then double-click 'Dial-Up Networking'.
- Windows Me: Click 'Start', 'Settings', 'Dial-Up Networking'.
- Windows 2000: Click 'Start', 'Settings', 'Network and Dial-Up Connections'.
- Windows XP: Click 'Start', 'Connect to', 'Show all connections'.

Customizing Settings (If Required)

Your Diva ADSL USB is normally configured to work with the your provider's ADSL network right out of the box. No further configuration is usually required. However, if you are instructed to change communication settings, follow these instructions.

1. Click 'Start', 'Programs', 'Eicon Networks Diva ADSL USB', 'Configure'.
2. The main Diva ADSL USB Tool appears. Click 'Settings'.
3. The settings page appears. Make the changes specified by your ADSL provider.



- Internet access will not be available unless the settings you specify match those of your provider.

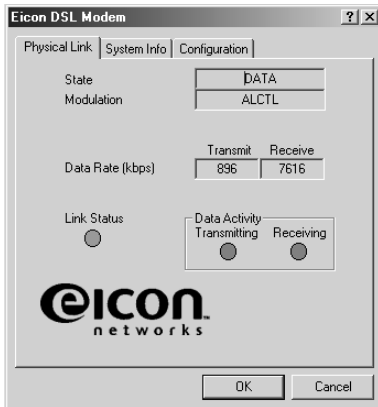
4. Click 'Apply'.
5. In the following window, select 'Yes', then click 'Finish' to restart Windows.

Setup Complete!

Congratulations – you may now surf the Internet! Launch your web browser, click 'File', 'Open' and enter a web address (such as www.eicon.com) to test your connection.

Checking Device Status

To check the status of your Diva ADSL USB, double-click the icon that appears in the system tray (🖱️). The following dialog box is displayed.



To remove the icon from the system tray, right-click on the icon and select 'Exit'.

You can also access this dialog box from the Control Panel folder (click 'Start', 'Settings', 'Control Panel'). The control panel is named 'Eicon Networks Diva DSL Modem'.

Removing the Software

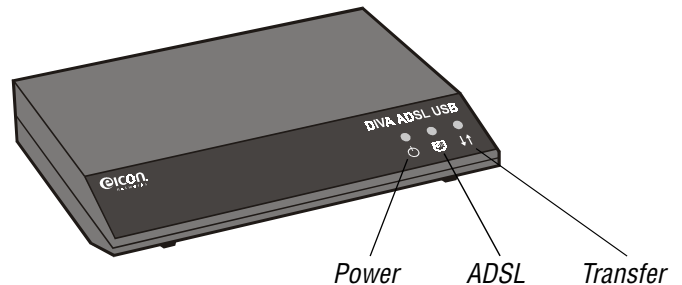
To remove the software, click 'Start', 'Programs', 'Eicon Networks Diva DSL Modem', 'Uninstall' and follow the onscreen instructions.

- Do not unplug the USB cable until the software uninstall program indicates it is safe to do so.

Restart your computer when requested.

Indicator Lights

The Diva ADSL USB indicator lights are located on the front panel, as shown below. Note that all the lights may go off when the Diva ADSL USB is not in use.



- **Power:** The USB cable is connected properly to your computer and is receiving electrical power.
- **ADSL:** If solid, the Diva ADSL USB has been able to communicate with your ADSL provider's equipment. However, this does not indicate that you have Internet access, which depends on the selection of the proper protocol.
If blinking, the Diva ADSL USB is unable to contact your provider's equipment, and Internet access is not possible. Check that you connected the ADSL cable correctly.
- **Transfer:** When blinking, data is being sent or received via the ADSL line.

Customer Service

Support via the World Wide Web

To obtain technical support, visit the Eicon Networks Helpweb at <http://www.eicon.com/support>.

Customer Service

For customer service, contact your Eicon Networks equipment supplier.

Other Eicon Networks Web Sites

You can find general information about Eicon Networks products and services at <http://www.eicon.com>.

Regulatory Information

Regulatory information for the Diva ADSL USB is located in the 'doc' folder on the Diva CD-ROM.

